

ATG 2031: Advanced Dreamweaver 4.0



Dreamweaver 4



August 2001

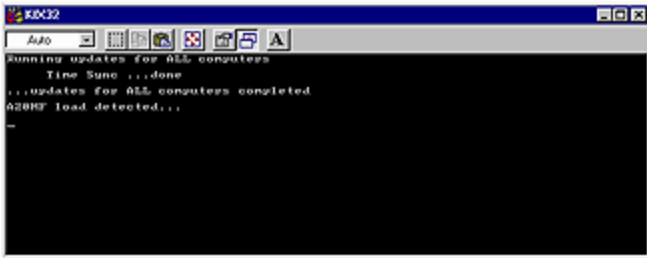
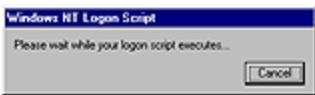
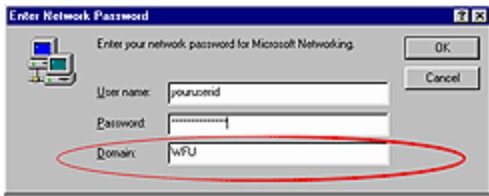
Wake Forest University

1.	Pre-requisites	1
1.1.	System requirements	1
1.2.	Intro class topics	2
1.3.	Copy class materials	2
2.	Extension Manager	4
2.1.	Extensions to add	4
2.2.	Macromedia Exchange.....	5
2.3.	Define new site for class materials	6
3.	Usability	8
3.1.	404 error.....	8
3.1.1.	Internal links	8
3.1.2.	External links	9
3.2.	Browser capability	10
3.3.	Bad tags.....	11
4.	Accessibility.....	12
4.1.	Check Page for Accessibility command	12
4.2.	UsableNet - 508 Accessibility Suite	13
4.3.	Size and speed.....	13
5.	Presentation.....	14
6.	Consistency	15
7.	Interactivity	16
7.1.	Course Builder	16
8.	Special Feature (optional, time permits).....	18
8.1.	Clean up Word HTML.....	18
8.2.	Web Photo Album 2.0.....	19
8.3.	Print site map	21
8.4.	Learning Site.....	22

1. Pre-requisitions

1.1. System requirements

- ❖ You need to login to the WFU network (see the little black box) to get to the class files



- ❖ Please install Dreamweaver 4.0 if you are using 3.x, 2.x or 1.x

It is available through the WFU Software Installation menu



1.2. *Intro class topics*

- ❖ Floating palettes
- ❖ Setting up site
- ❖ Insert text/hyperlink/images
- ❖ Page properties
- ❖ Table (Ch. 7 p. 183-202)
- ❖ Publish
- ❖ Rollover images (p. 276-277) (time permits)
- ❖ Image map (time permits)
- ❖ Flash text (time permits)

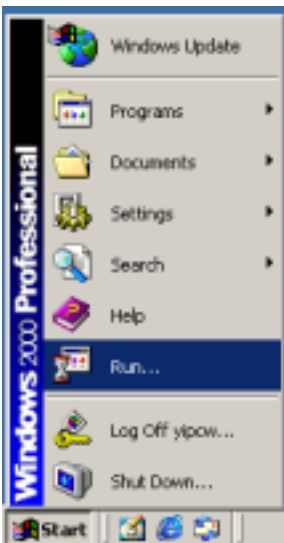
- skip Frames (Ch. 8 p. 203-220)

Note : Frames or Tables? see Macromedia support file

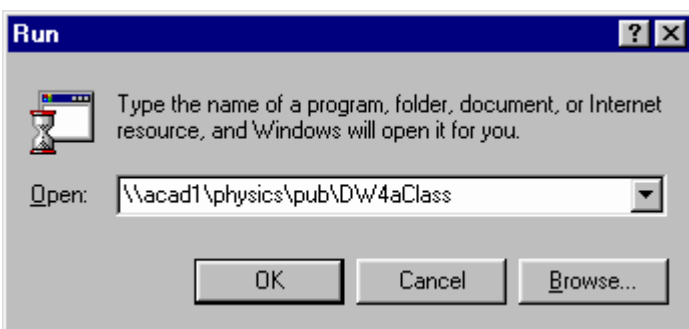
http://www.macromedia.com/support/dreamweaver/layout/frames_or_tables/

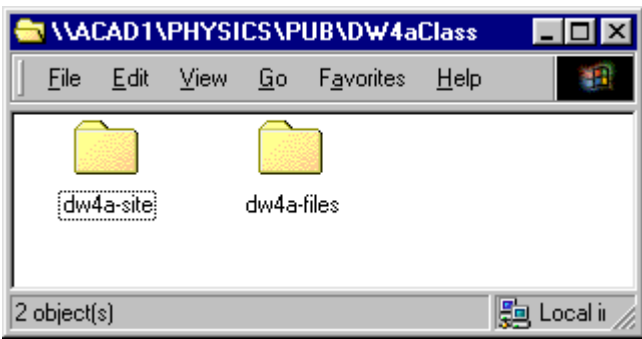
1.3. *Copy class materials*

From Start menu, select “Run ..”

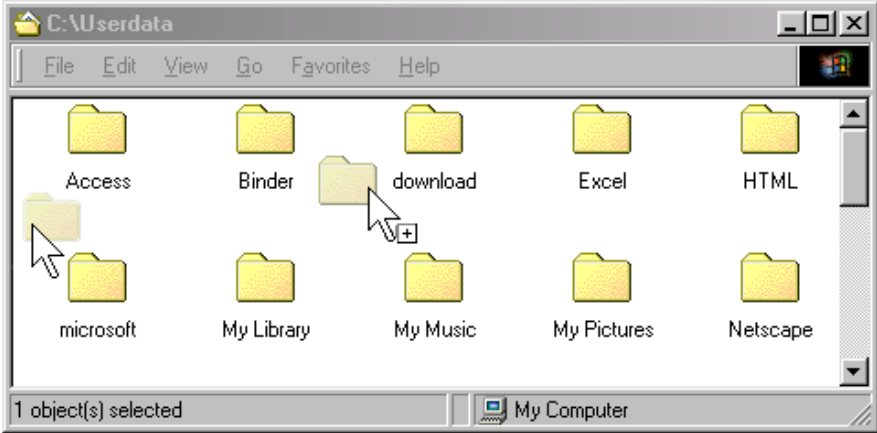
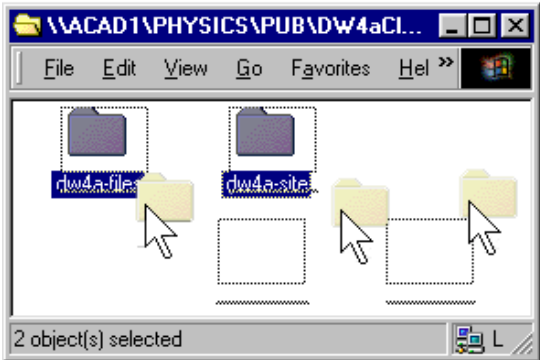


and if you have a 21m ThinkPad, type `\\acad1\physics\pub\DW4aClass-a21m`
or, if you have a a20m or 390e ThinPad, type `\\acad1\physics\pub\DW4aClass-a20m`



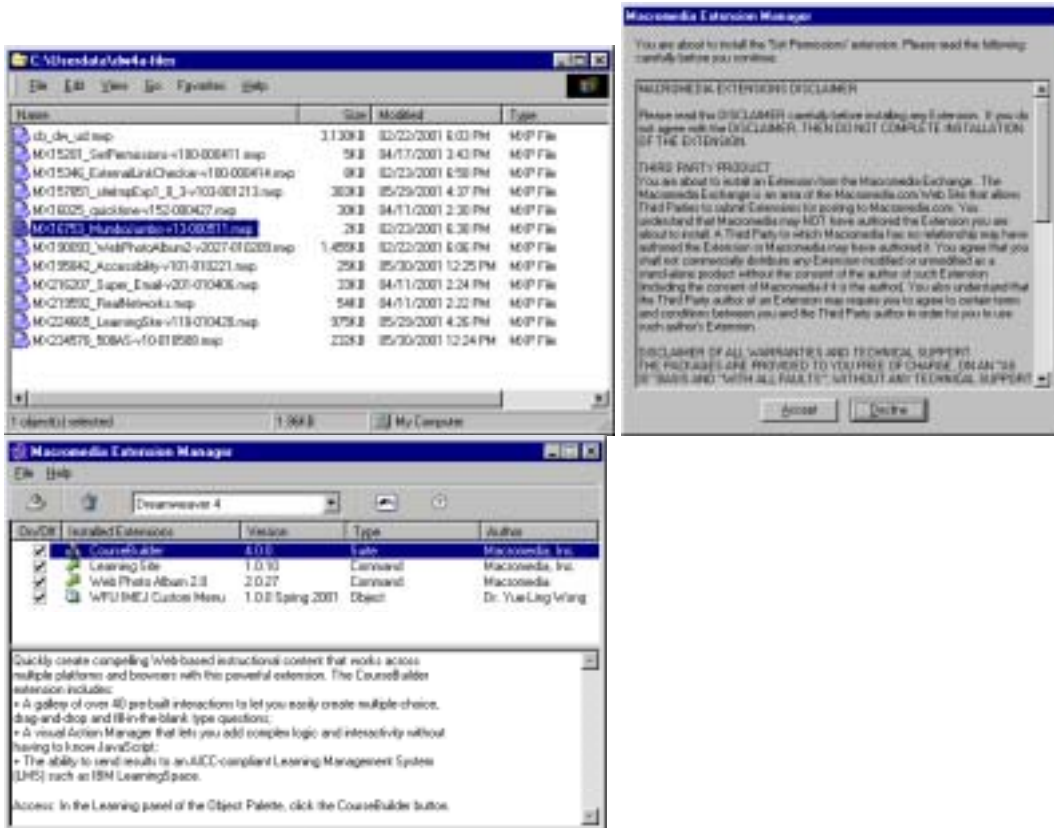


copy the folders “dw4a-site” and “dw4a-files” into your “C:\userdata”



2. Extension Manager

Double click on one of the .mxp files in c:\userdata\dw4-files



2.1. Extensions to add

- ❖ External Link Checker (third party addin alternative, didn't make it in Dreamweaver 4.0 even though the manual said so, errata said it is a mistake)
- ❖ Check accessibility command
- ❖ Section 508 accessibility suite
- ❖ CourseBuilder (FREE now, used to be CourseBuilder for Dreamweaver, Attain Objects, Dreamweaver Attain and costs \$\$\$\$)
- ❖ Web Photo Album 2.0 (if time permits, upgrade the built-in 1.0, which requires Fireworks. 2.0 let you do simple navigation page without FW4)
- ❖ Learning Site (if time permits)
- ❖ MumboJumbo (optional, not cover in this class)
- ❖ Super Email (optional, not cover in this class)
- ❖ QuickTime (optional, not cover in this class)
- ❖ Real Media (optional, not cover in this class)
- ❖ Site Import / Export (optional, not cover in this class)
- ❖ Set FTP permission (optional, not cover in this class)

Double click on each of the mxp files until you got all of them installed.

Most (but not all) of these extensions and more are pre-loaded/installed in 2001-2002 standard load on the a21m.

Note 1 : install extension need you to restart Dreamweaver if it is running for changes to take effect

Note 2 : import site require restart too

2.2. Macromedia Exchange

Where can you get those goodies and more?

<http://www.macromedia.com/exchange/dreamweaver/>

Note: need to registration to get a Macromedia ID before you can download extensions



2.3. Define new site for class materials

Start DW4



Create a new site with the following parameters

New site

Local Info -

site name : DW4a class

local root folder – change to to c:\userdata\dw4a-site

(optional) http address : http://www.wfu.edu/~yourloginid/dw4a-site/

Remote Info -

use none

(optional) local/network : you can change to \\acfiles\www-home\dw4a-site

Design Notes -

use defaults

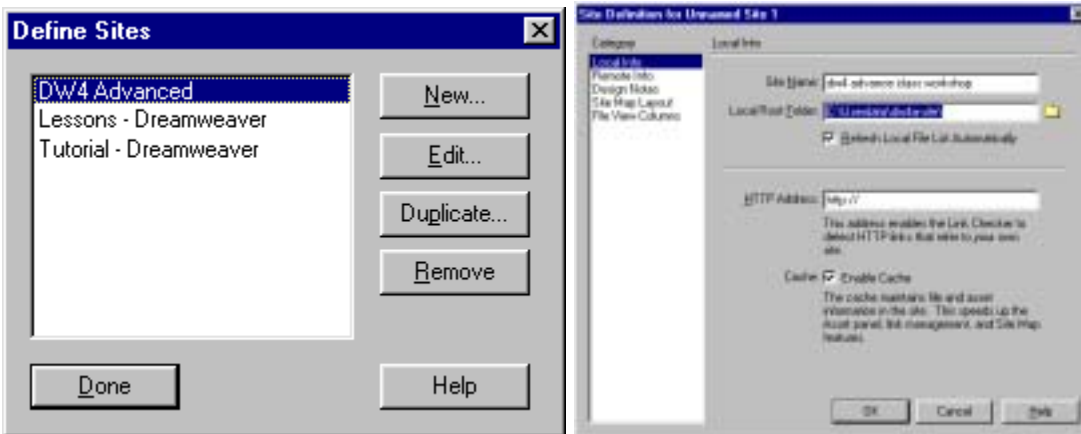
(optional) disable it

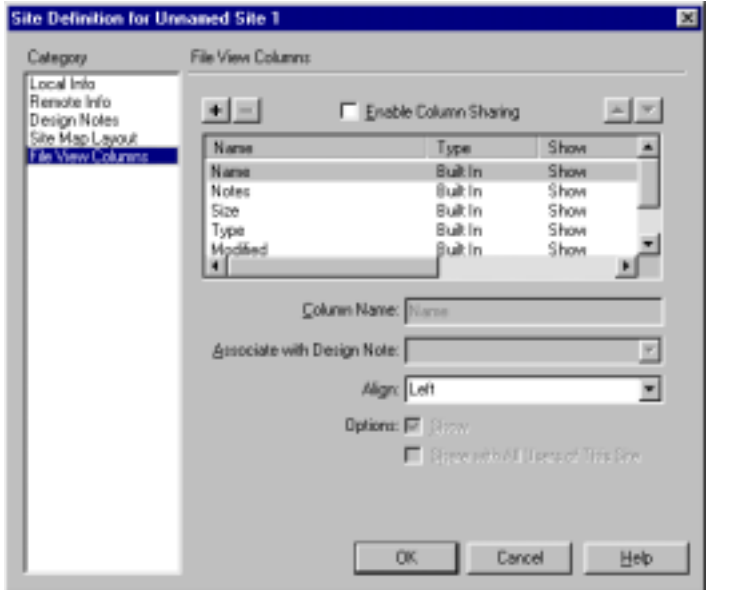
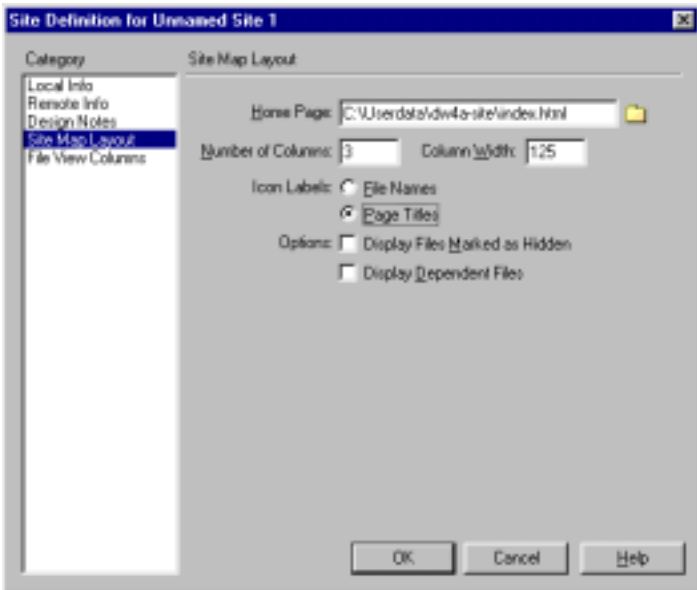
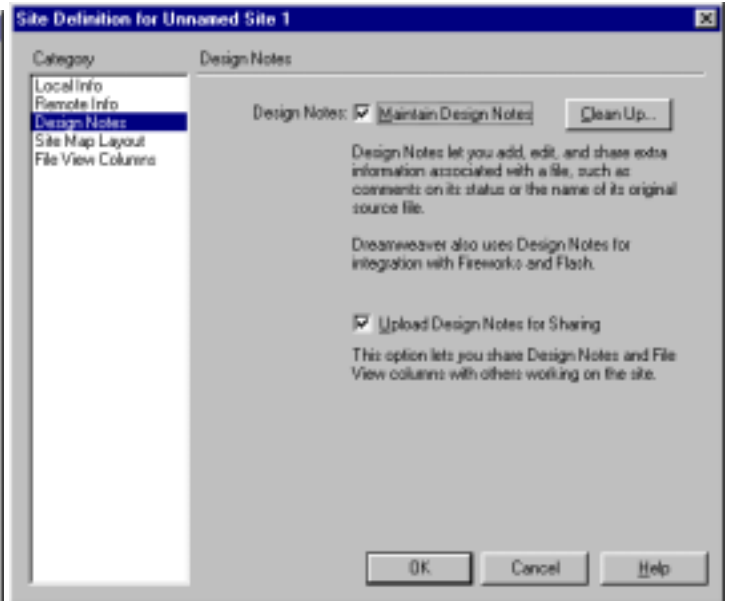
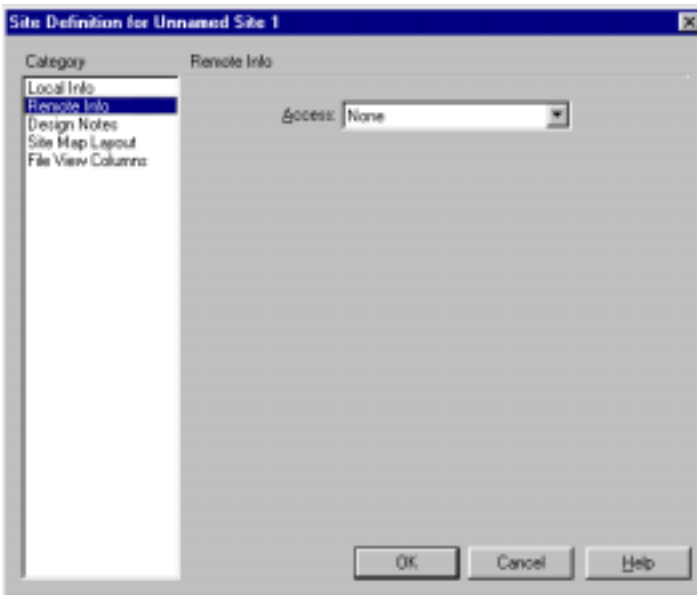
Site Map Layout -

select c:\userdata\dw4a-site\index.html

(optional) change number of columns to 3, and/or show page title

File View Columns – use defaults



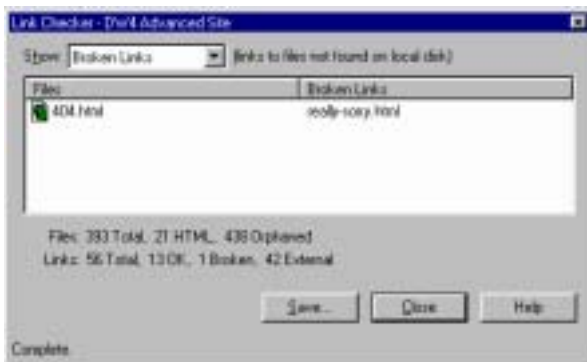
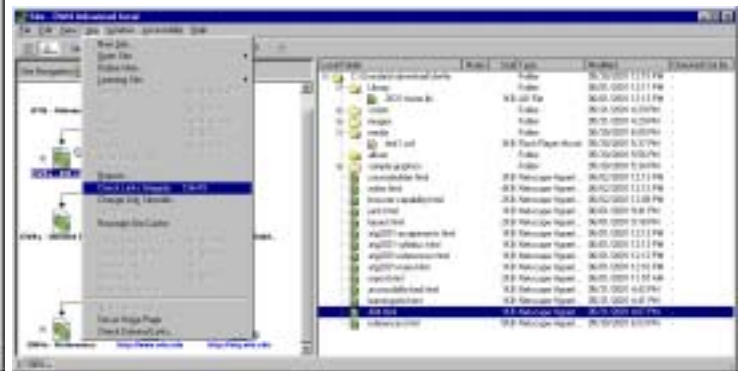
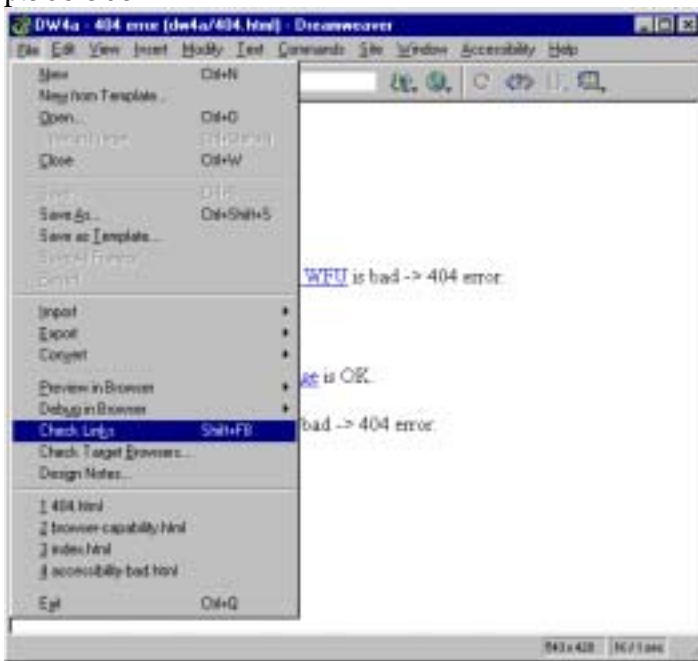


3. Usability

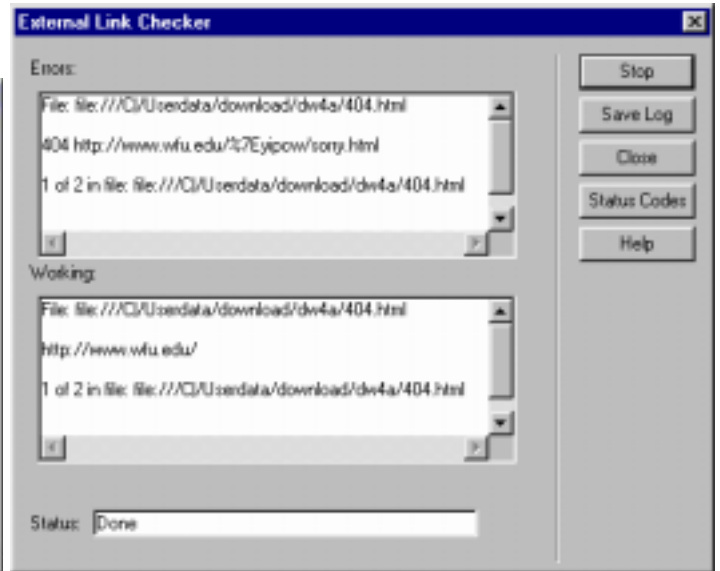
3.1. 404 error

3.1.1. Internal links

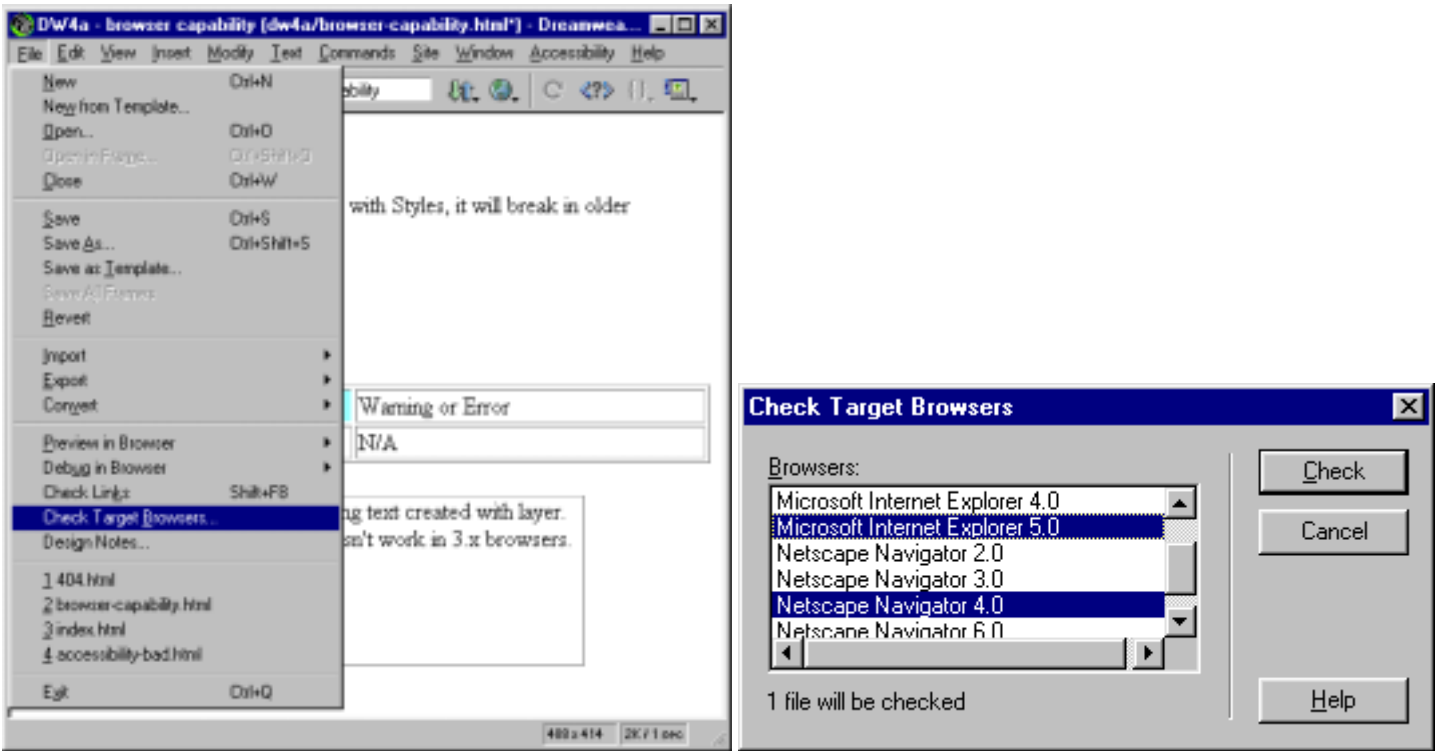
p.506-508



3.1.2. External links

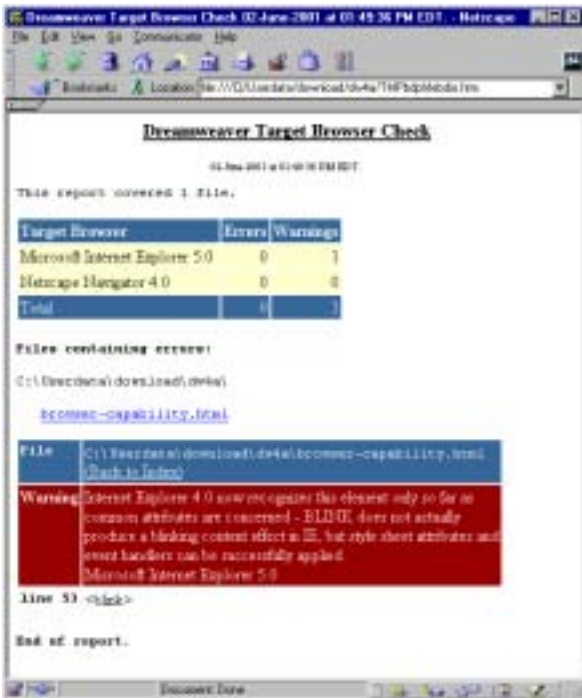


3.2. Browser capability

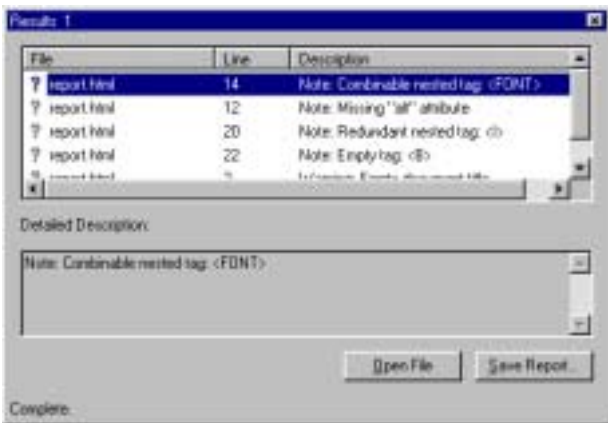
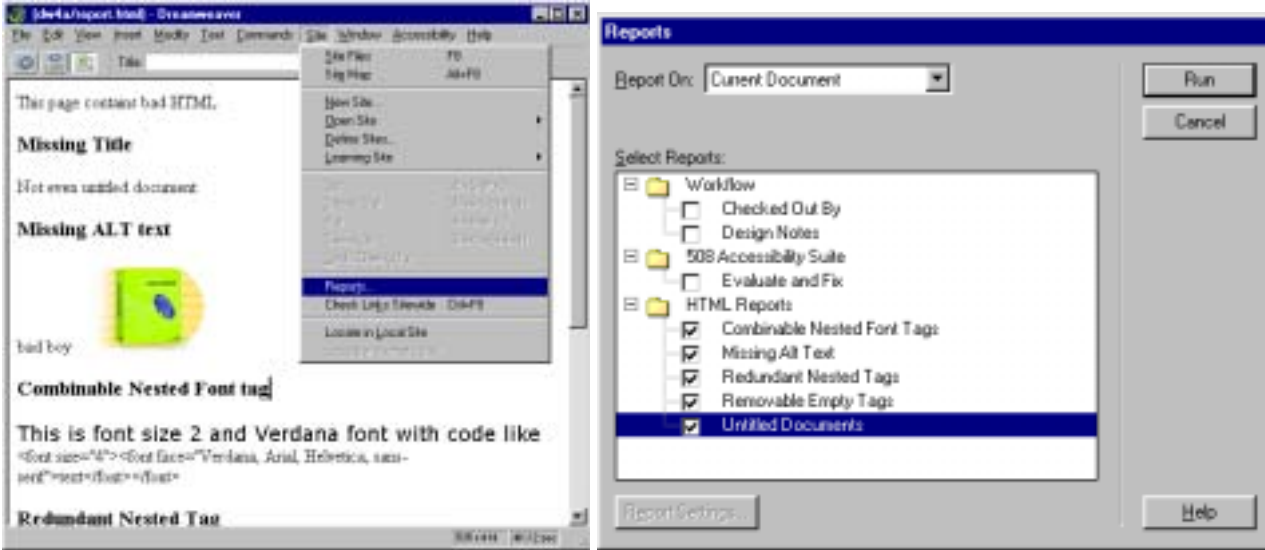


Note 1: shift click to select multiply browser

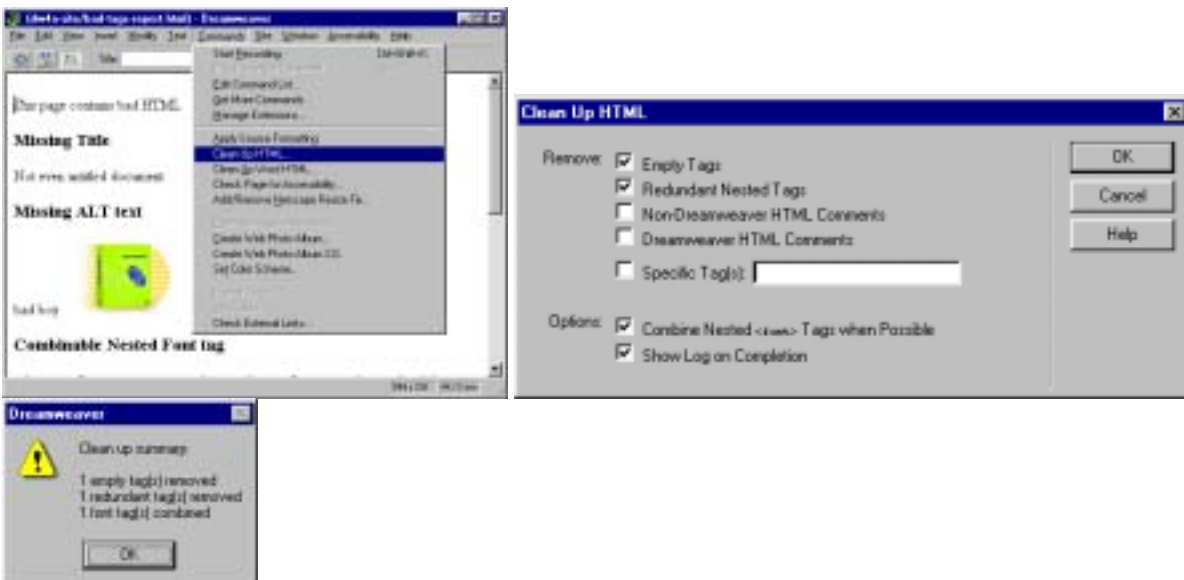
Note 2: Netscape 6.0 only appears if you have upgraded to Dreamweaver 4.01



3.3. Bad tags



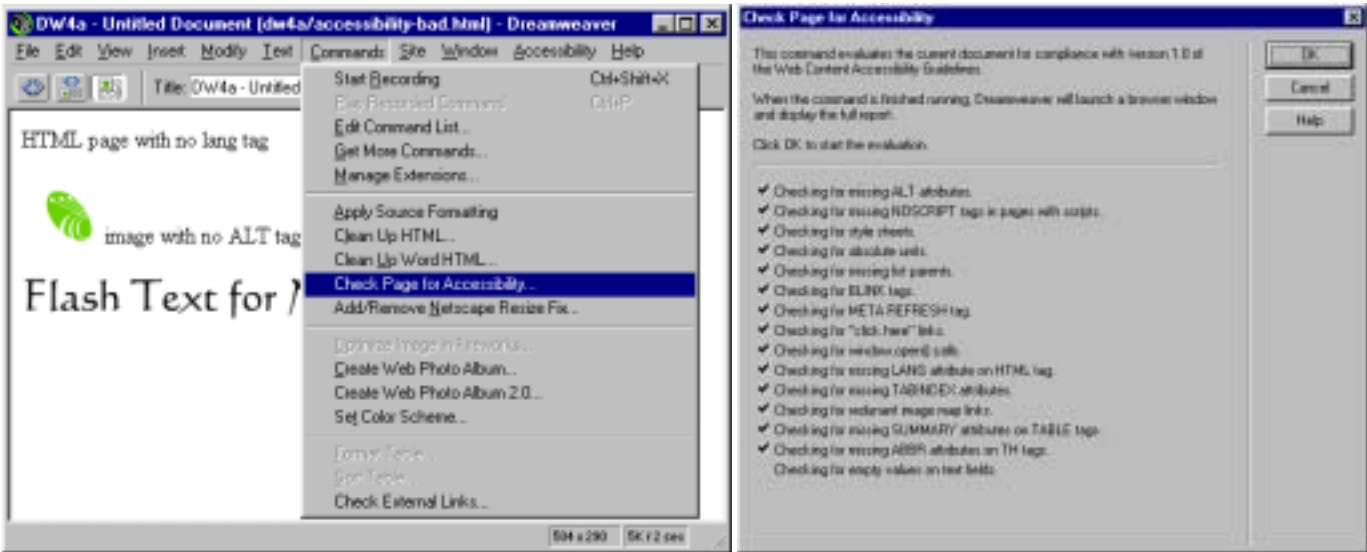
Use the Cleanup HTML command to fix most of these problems



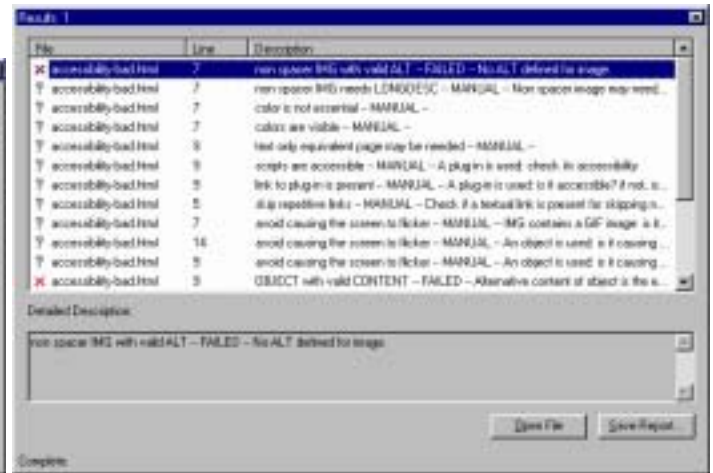
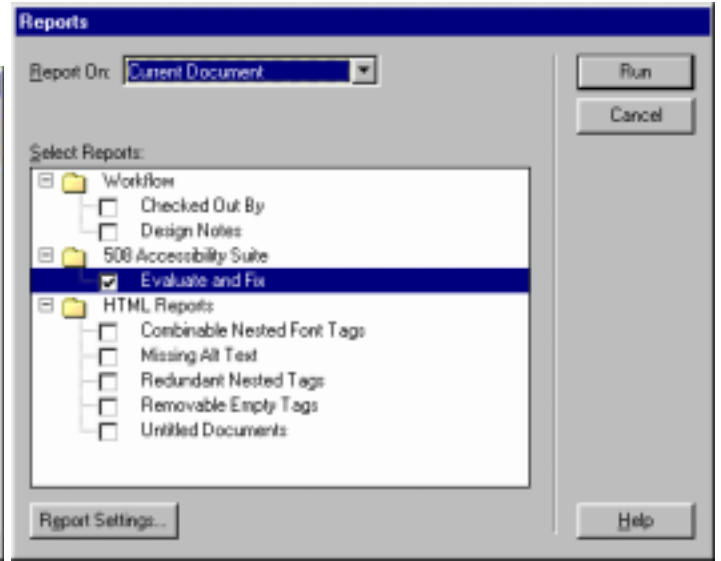
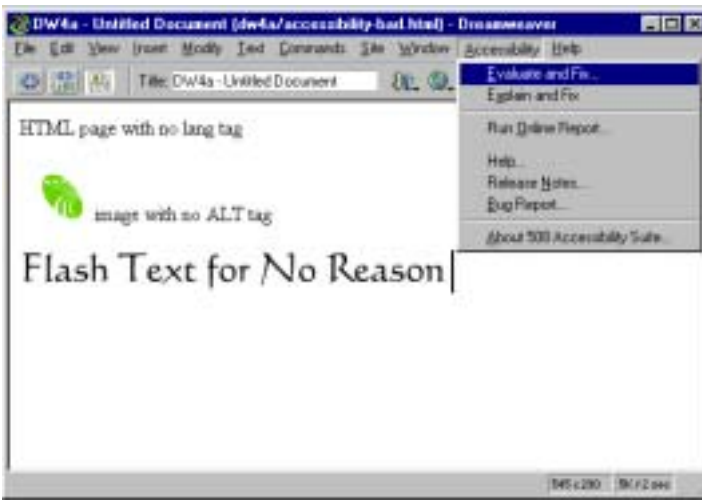
4. Accessibility

Section 508 of Rehabilitation Act Amendments (Workforce Investment Act?) of 1998, effective June 21, 2001
See Architectural and Transportation Barriers Compliance Board (Access Board) info on the standard.

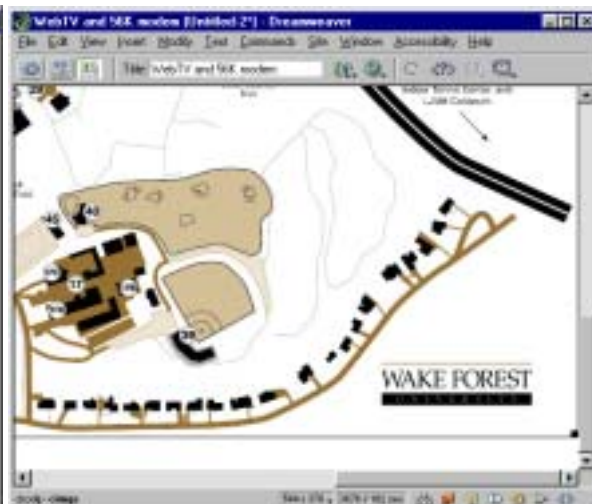
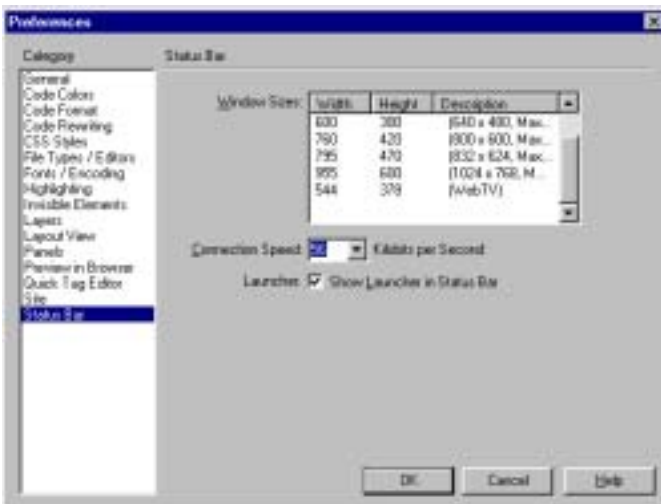
4.1. Check Page for Accessibility command



4.2. UsableNet - 508 Accessibility Suite



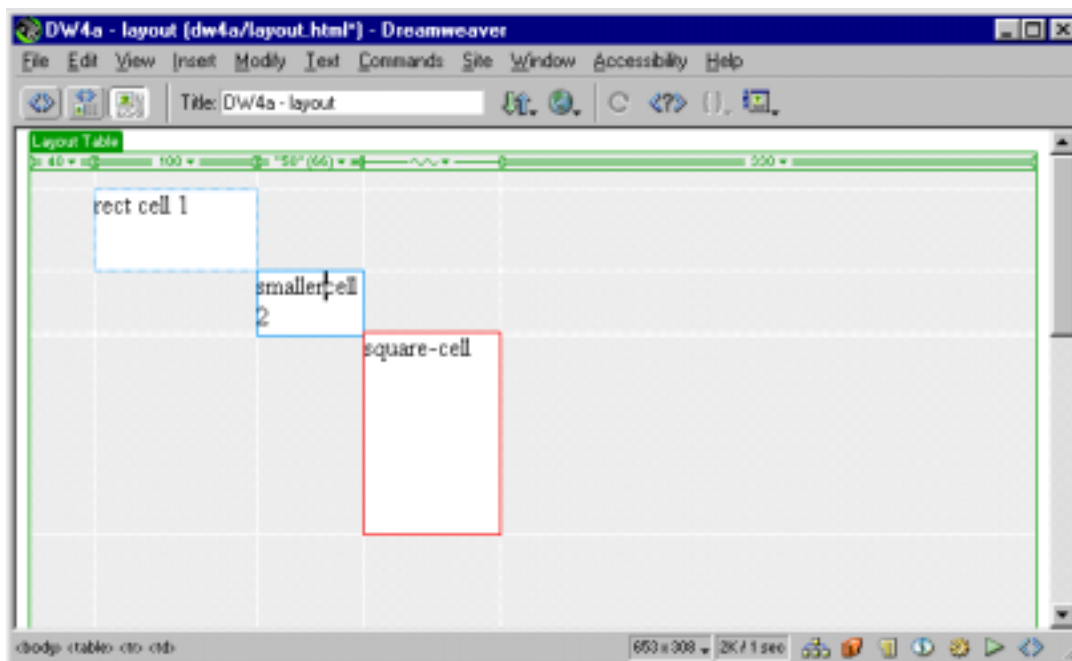
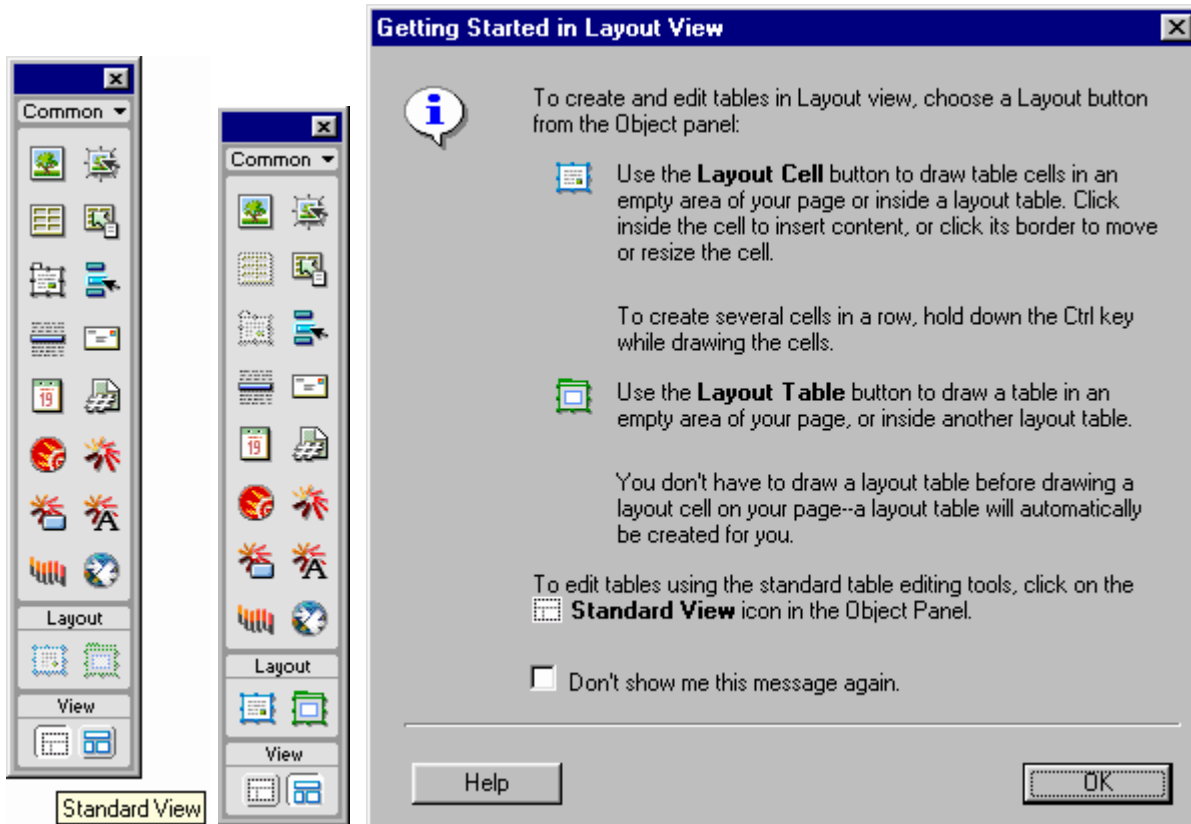
4.3. Size and speed



5. Presentation

layer to table ((Ch. 6, p. 421-424,)

layout view (p. 167-182)

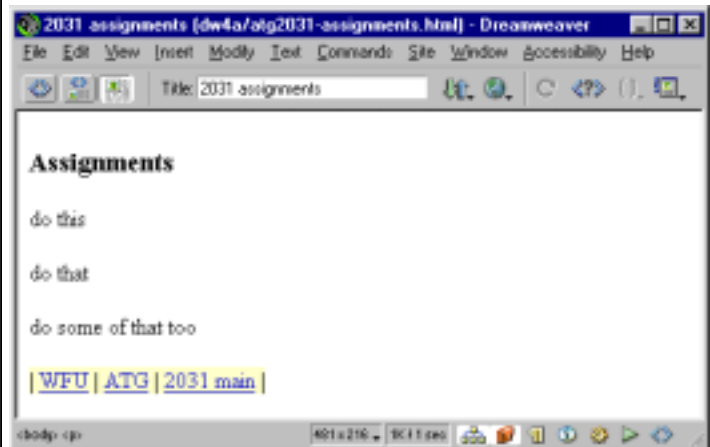
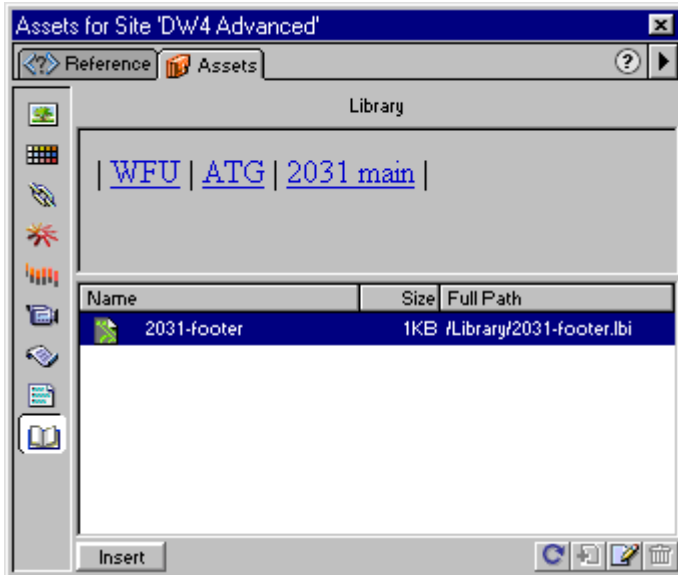


6. Consistency

Reusable Content

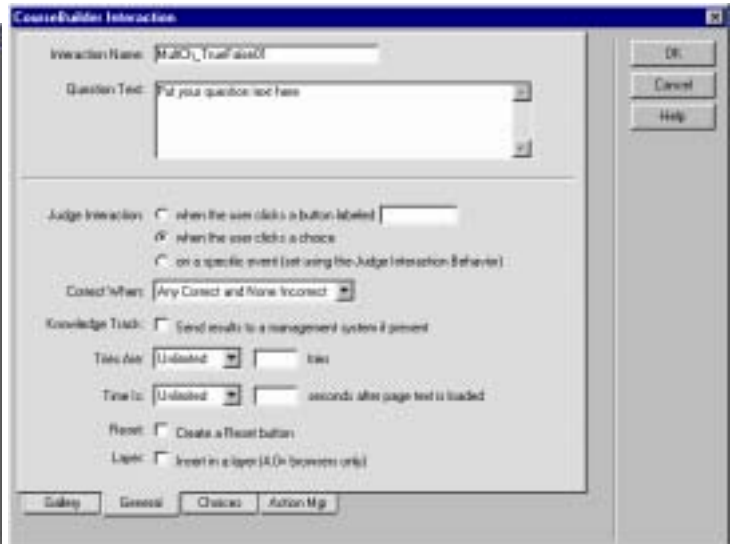
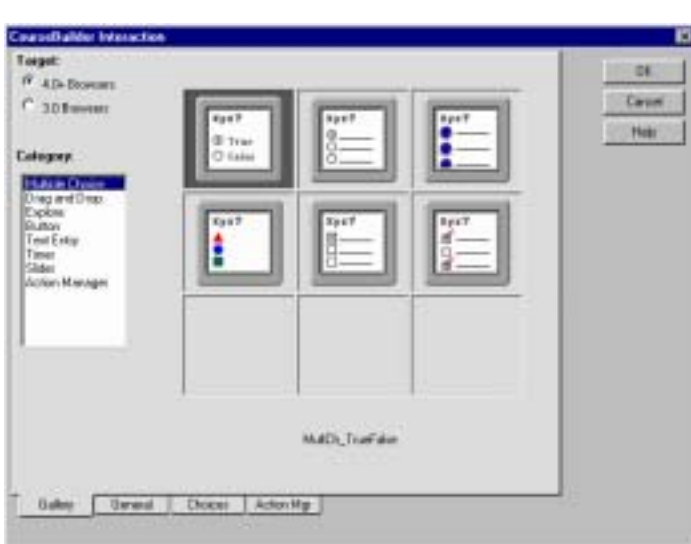
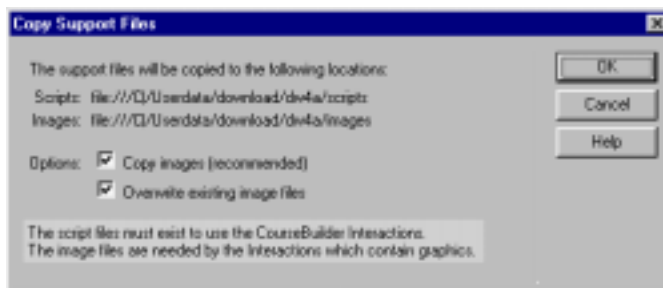
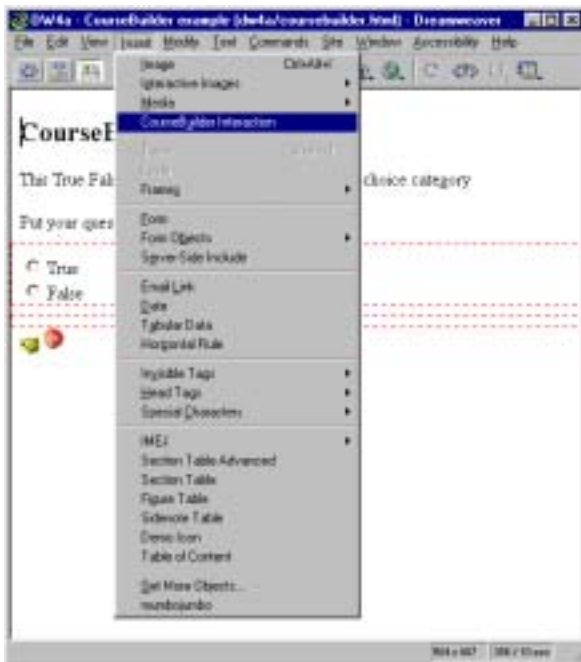
Library (p.396-403)

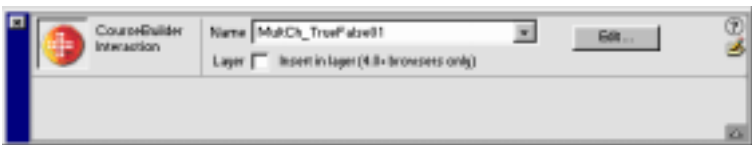
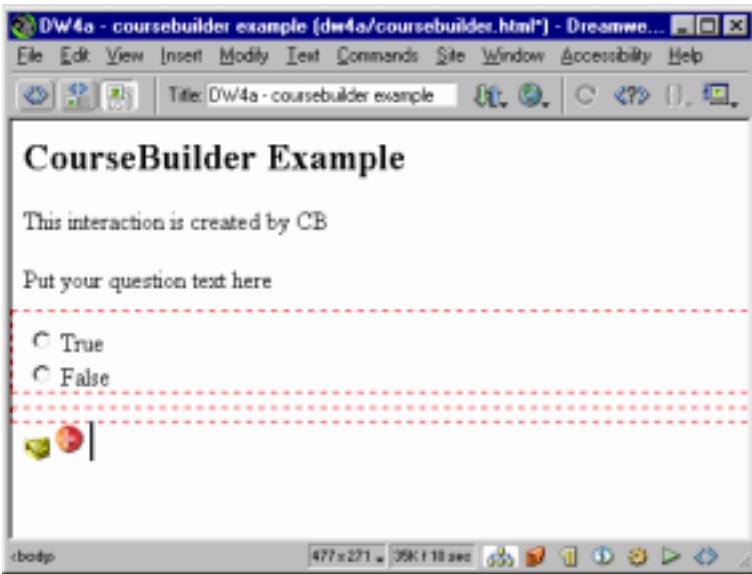
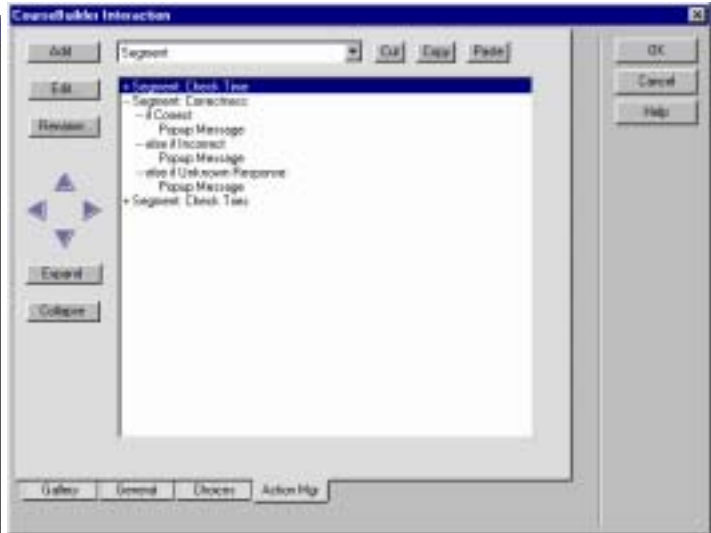
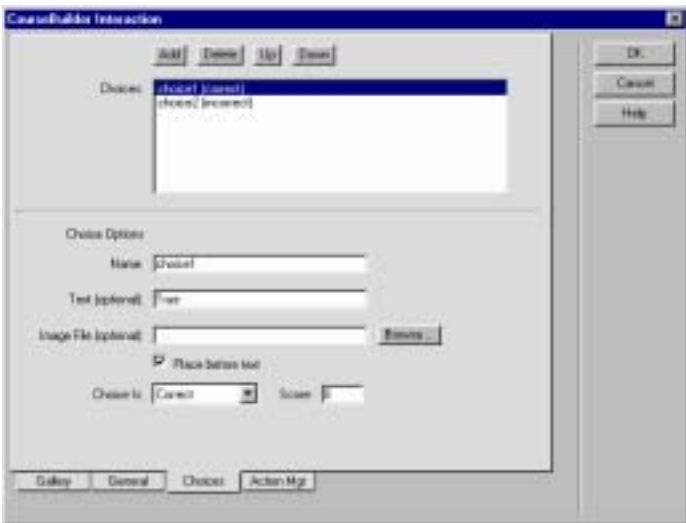
Template – not covered in this workshop



7. Interactivity

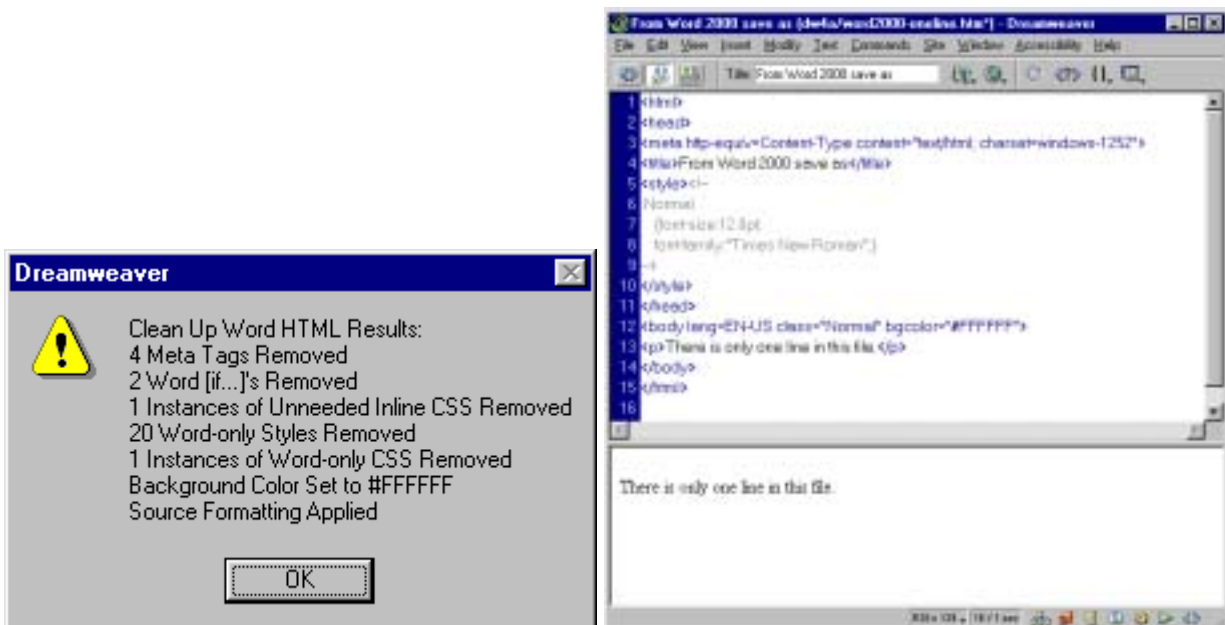
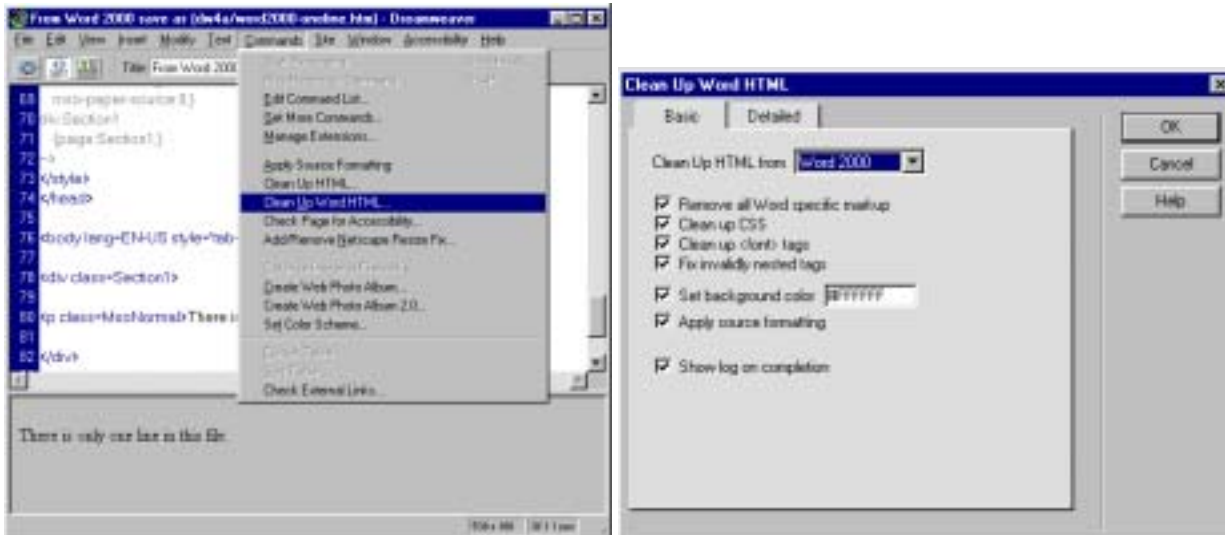
7.1. Course Builder





8. Special Feature (optional, time permits)

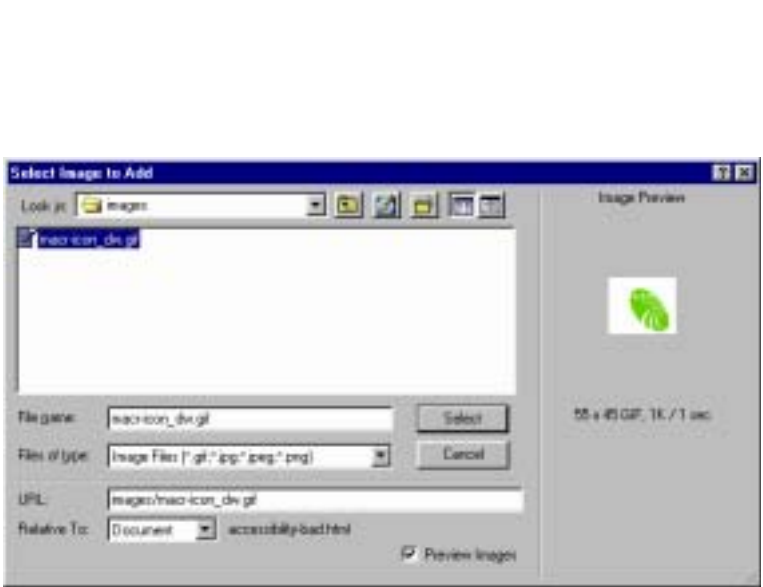
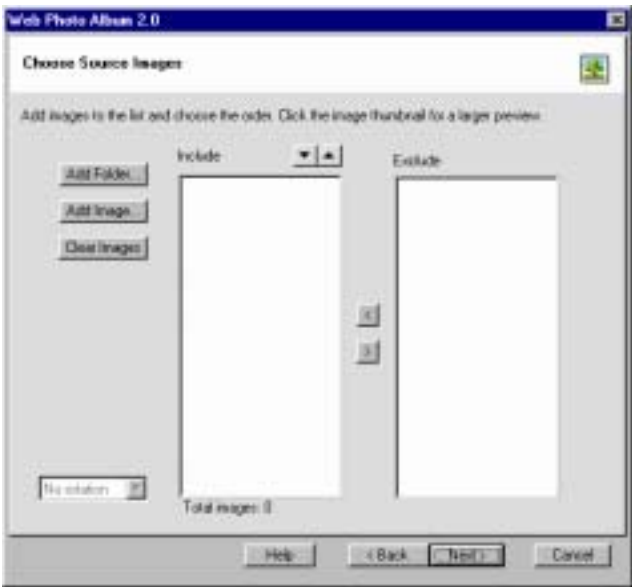
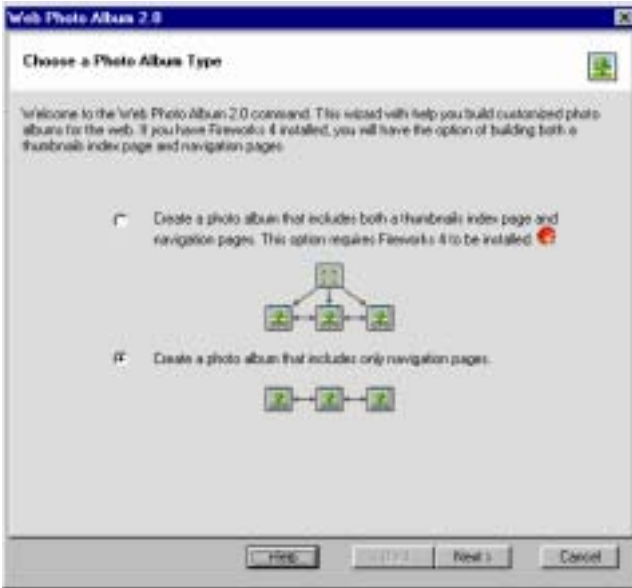
8.1. Clean up Word HTML

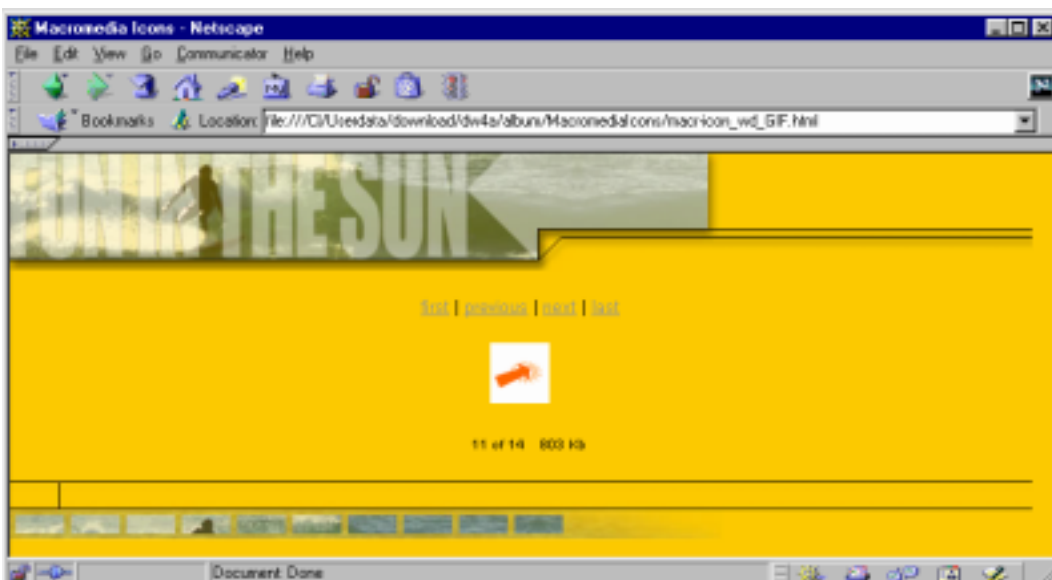


8.2. Web Photo Album 2.0

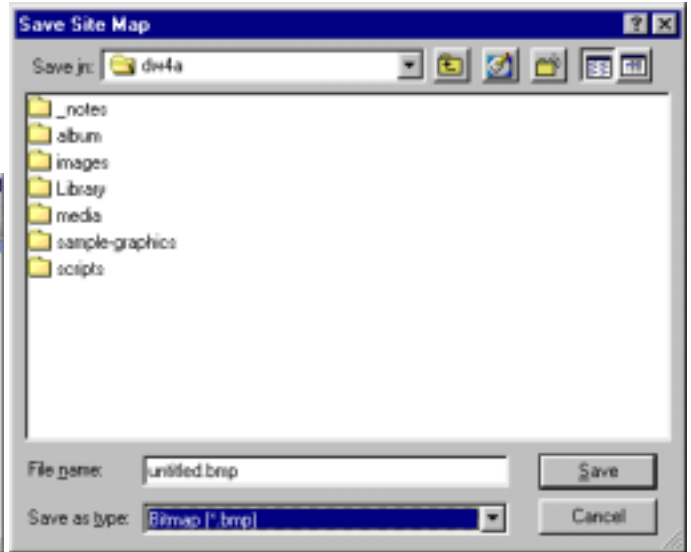
without Fireworks 4.0 - no thumbnails and index page, just navigation page

Alternatives – Extensis Portfolio, Adobe Photoshop, other thumbnail programs.

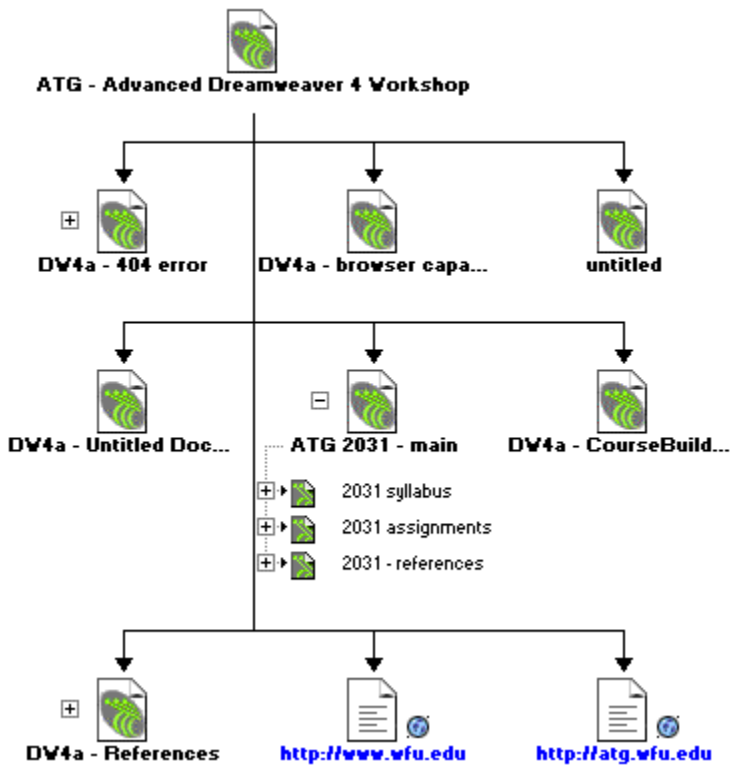




8.3. Print site map



BMP or PNG



8.4. Learning Site

Create a new site

