



Worldviews:

Exhibit featuring Maya ceramics opens

“Worldviews: Maya Ceramics from the Palmer Collection” is on display at the Museum of Anthropology through January 31. Curated by MOA Director Stephen L. Whittington, the exhibit contains 35 ceramic objects, nine jade objects and one stone object—some of them internationally known and featured in recent books on the Maya. All exhibit text and labels are in both English and Spanish.

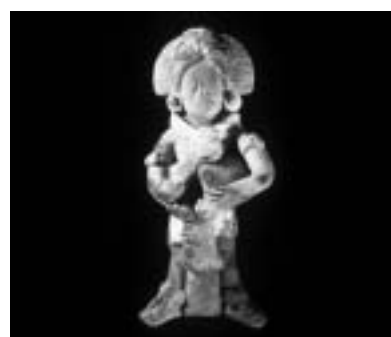
The items in the exhibit are from the collection of William P. Palmer III, who amassed a large collection of Pre-Columbian objects before his death in 1982. Four years later, the objects became the core collection of the Hudson Museum at the University of Maine. Selected pieces from the Hudson Museum are on loan to Wake Forest through the end of January.

The ceramics and other artifacts in the exhibit were generally produced by Maya scribes and artisans during the Classic period extending from A.D. 250 to 900. They contain a wealth of information about Maya ideology. The ceramics show views of a variety of worlds important to the Maya. On some vessels are the gods, monsters and heroes of the underworld. On others are palace scenes with rulers and their attendants. Some show aspects of the cosmos, integral to the cyclical Maya universe. Plants and animals appear on other ceramics.

Classic Maya civilization existed in southeastern Mexico, the Yucatán Peninsula, Guatemala, Belize, western Honduras and western El Salvador. The civilization continued in the highlands of Guatemala and in the northern Yucatán until the arrival of the Spanish in the early 1500s.

The ability to write and read hieroglyphic texts and interpret the symbolism of pictures as found on the ceramics of the Palmer Collection was all but lost soon afterward. Only since the 1950s has significant progress been made in interpreting Maya artifacts. This exhibit interprets symbolism and hieroglyphs in light of recent scholarship.

“Worldviews” and associated free programs are made possible by a grant from the North Carolina Humanities Council, a state-based program of the National Endowment for the Humanities. The exhibit’s corporate sponsor is Triad Plastic Supply, Inc. Sponsors from Wake Forest are the Dean of the College; the Office of Multicultural Affairs; the departments of anthropology, art, history, religion and Romance languages; the Charlotte and Philip Hanes Art Gallery; the Wake Forest Divinity School; and the Center for International Studies.



Painted ceramic figurine, late classic (A.D. 600-900), from Jaina, Mexico



Painted modeled incense burner, Late Classic (A.D. 600-900), from Alta Verapaz, Guatemala



Painted ceramic figurine, Late Classic (A.D. 600-900), from Alta Verapaz, Guatemala (Coban region)

The purposes of the Museum are to educate people about anthropology; encourage public awareness of and responsibility towards anthropological resources; to protect, preserve and manage the anthropological collections of the University; and enhance the instructional and research programs of the Wake Forest University Department of Anthropology.

Location

Behind Kentner Stadium
on the Reynolda Campus

Museum Hours

Tuesday-Saturday 10 a.m. – 4:30 p.m.

Arrangements can be made for school classes & special functions. Closed Sundays, Mondays, July 4, Labor Day, Thanksgiving Holiday Weekend, New Year's Day, Good Friday & Memorial Day weekends & Christmas Holiday Intersession. Hours are shortened during academic recesses and summer. Please call.

Museum of Anthropology Newsletter
Volume 10, No. 2 / Fall/Winter 2002
Published three times a year by the Museum
of Anthropology / Wake Forest University
P.O. Box 7267 / Winston-Salem, NC 27109-7267
336-758-5282 (phone) 336-758-5116 (fax)
E-mail: moa@wfu.edu /
Web site: <http://www.wfu.edu/MOA>

Editors

Stephen L. Whittington /
Sarah Cucinella, Student Co-Editor

Contributing Writers

Rachel Cook, Anne Gilmore,
Beverly Hancock, Kim Robertson

Design and Editing

Kerry King, Jessica Koman & Sonya Peterson,
WFU Office of Creative Services

Director's Address

My first three months on the job have been very exciting and fulfilling as I have gotten to know my way around the Wake Forest campus and the Piedmont Triad. It has been gratifying to see the outpouring of support from Wake Forest departments and units that has made it possible to bring "Worldviews" to the Museum of Anthropology, where it will supplement the University's cultural and academic offerings through parts of two semesters. I was thrilled to receive a grant from the North Carolina Humanities Council and to have Triad Plastic Supply, Inc., become the Museum's first Corporate Sponsor. The generous support of both organizations made it possible to bring this exciting exhibit from the Hudson Museum at the University of Maine and to develop an extensive set of supporting programs for children and adults.

The staff and I have used the exhibit to make connections with the Piedmont Triad's growing and vibrant Hispanic community. Special events included a Saturday morning bus tour for families and an opening reception, hosted by William C. Gordon, Wake Forest's new Provost. Armando Ortiz Rocha, the new Consul of Mexico in Raleigh, and his wife, Sara, were the guests of honor at the reception.

Although I write this feeling a fair amount of fatigue during the week following the exhibit opening, I do not plan to relax for too long. The staff and I have education programs and exhibits to create and long-range planning to undertake. I will soon begin the process of creating an advisory board, whose members I envision will act as advisors for creating a strategic plan and as advocates and ambassadors for the Museum. It is my hope that an enthusiastic advisory board will work together with my creative staff to make the Museum of Anthropology a more visible and more central part of the Wake Forest and Piedmont Triad cultural scene.

In keeping with new activities at the Museum, we have instituted a new name and appearance for the newsletter and have re-christened our membership organization the MOA Friends. Let the staff and me know if you like what we are doing.



Stephen L. Whittington, Director

Museum Staff

Stephen L. Whittington, Director / Beverly Hancock, Curator of Education / Myrna Mackin, Administrative Assistant / Kim Robertson, Museum Educator / Anne Gilmore, Membership Secretary / Shannon Byrnside, Sarah Cucinella, Jill Kovalcik, Student Assistants

Community Volunteers

Amanda Calhoun, Ben Desiderio, Gee Enegren, Marisa Estelrich, Jeff Feintech, Anne and Larry Gilmore, Gary Hancock, Kay Johnson, Caitlyn Kraft, Candi Lavender, Tony Layng, Myrna and James Mackin, David McDaniel, John Reynolds, Bertha Roundtree, Kathy Salkin, Katie Shugart, Jeanne Simonelli, Wilma Smiley, Eloise K. Smith, Brian Whiteman, Ruth and Don Williams, Mary Wright

Junior Volunteers

Ria Fulton, Carleigh High, Emma McCullough, Jamie McConnell, Elizabeth Sugg, Eric Sumner

Teacher Advisory Council

Gail Frank, Jefferson Middle School; Jeff Gobble, North Davidson Middle School; Patricia Perryman, Northwest Middle School; Jack Smith, Sherwood Elementary School; Marla Sparks, Lewisville Elementary School; Jan Standerfer, The Summit School; Jane Thomas, Meadowlark Elementary School; Bernice Turner, Greensboro Day School; Paula Warlick, Vienna Elementary School

Volunteer News

By Anne Gilmore, Membership Secretary

What a busy and exciting fall we are having at the Museum! Our new director, Dr. Whittington, is doing a tremendous job arranging for some wonderful exhibits in the coming months.

Throughout the month of October we celebrated the "Days of the Dead" with our annual ofrenda. This exhibit culminated in a program and reception October 30 with the sharing of traditions associated with the holiday by Cristina Roche. Celebrating the "Days of the Dead" was a taste for the exciting exploration of Mexican culture with our winter exhibit "Worldviews: Maya Ceramics from the Palmer Collection."

"Worldviews" is a real coup for our Museum. Dr. Whittington curated this exhibit while directing the Hudson Museum at the University of Maine. It includes many impressive ceramics and carvings like none that have ever been seen at the Museum of Anthropology.

A series of lectures and video presentations are being held in conjunction with the "Worldviews" exhibit. The opening reception for MOA Friends took place on November 8, followed by a bus tour and reception for the local Hispanic community on Saturday November 9, and a very special reception on November 10 for local and state Hispanic leaders and dignitaries. Thank you to all volunteers and staff, including four students from the Department of Romance Languages, who assisted with these events.

Our Friends Annual Holiday Dinner was held Tuesday, December 3. Everyone enjoyed the ethnic food prepared by Museum Friends. A Classical Spanish guitarist, Julio Carrasco, who also played at the "Worldviews" reception on November 10, provided our entertainment for the evening.

A letter mailed in August urged many of our former MOA Friends to renew their memberships. At this time I call on you again to consider renewing your memberships. There are many surprising changes taking place at the Museum and we would love for you to be a part of them. We miss you all.

If anyone would be interested in serving as a volunteer social chairperson or just serving on our social committee, please call the Museum. We have a lot of events to plan and really could use more help.

Shop News

By Sarah Cucinella, Student Co-Editor

We have lots of new and exciting merchandise from around the world in the shop. A special shipment of jewelry from Museum Reproductions has just arrived and includes charm bracelets reminiscent of Egyptian hieroglyphs, miniature faux Faberge eggs and stylistic interpretations of Viking runes. We have also recently received a series of reverse painted Chinese snuff bottles that would be a lovely addition to a perfume bottle collection. The ethnic cookbook *Global Feast* includes many tasteful ethnic recipes from around the world and would be a perfect gift for the cook in your family.

Remember that MOA Friends receive a 10 percent discount on all purchases over \$5. Come choose from a wide variety of jewelry and gifts from around the world.

If you are looking for a particular item or are interested in seeing the shop carry a particular item, call Myrna at 758-5282 or e-mail her at moa@wfu.edu.



Upcoming Events

Kimono: Constructing a National Image
Opening February 28

Today it is easy for us to think of ourselves as citizens of a nation. However, before the 19th century most people identified with a more local social unit. When forming a nation, governments seek symbols that express the uniqueness of the new nation and instill in its citizens a sense of identity with that symbol. This exhibit will explore the social and cultural history of the kimono and examine how it became and remains a symbol of modern Japan. "Kimono" uses the Museum's collection of early to mid-20th century objects.

Peruvian Textiles from Past & Present
Opening in March

Collectors from Winston-Salem will be loaning the Museum beautiful woven textiles, complete outfits of native clothing and weaving paraphernalia from 19th and 20th century Peru. Spectacular examples of ancient cloth, clothing and looms from the Chimú, Chancay, Moche, Nasca and Inca cultures will be on loan from collectors in New York City. Watch for more information about the exhibit and associated programs in the spring.

Education News

By Kim Robertson, Museum Educator, and Beverlye Hancock, Curator of Education

After-School Programs

Our winter/spring after-school series, "Exploring World Cultures," will explore a variety of cultures in conjunction with Museum exhibits. The series will begin on January 13 and continue on the second Monday in February, March and April. Each program will be held from 4:15 to 5:30 p.m. Students can register for the whole series (\$32 for MOA Friends and \$35 for members of the community) or individual sessions (\$12 MOA Friends and \$15 for community members). Please register by calling 758-5282.

January 13 • Land of the Hero Twins

This program will be in conjunction with our special "Worldviews" exhibit that contains ancient ceramic vases and other objects used by the Maya, a group of people from parts of Central America. See pictures of the Hero Twins on the vases. Hear about their struggle with the Gods of the Underworld and their ultimate victory. Make your own Maya "vase."

February 10 • Rocks that Speak

During ancient times, people throughout the world created artwork using rock and cave walls as their canvas. What do these fascinating pictures tell us? Learn about Kokopelli, a figure who shows up frequently in Southwestern rock art. Design rock art with us!

March 10 • Hanetsuki: A Japanese New Year's Game

Make the hagoita needed to play this game, practice the skills involved, and view the Museum of Anthropology's new exhibit about Japan.

April 14 • Inca Secrets

Explore the Museum's special exhibit on Peruvian textiles. Find out the secrets anthropologists have uncovered in the textiles and other mysteries from the time of the ancient Inca people. Create an Inca treasure.

Special Event

On March 1, the Museum will participate in a citywide story-telling day sponsored by MASK—Museums, Arts and Science for Kids. MASK is composed of educators from non-profit organizations and promotes programs for children. On Saturday, March 1, all MASK members will offer free programs at various times throughout the day.

The Museum of Anthropology will present Cherokee storyteller Freeman Owle. Mr. Owle participated in a family day event at the Museum several years ago. He was overwhelmingly well received, and we are looking forward to another exciting afternoon of Cherokee traditional stories.

Story time at the Museum is 1 p.m. Be sure to mark your calendars and come be a part of this exciting and fun day of adventures through stories. Young people and those young at heart are welcome.

Summer Camps

Summer Camp 2003, "Exploring the Land of Cedar and Sea," will take place the weeks of June 16–20, June 23–27 and July 7–11. Camp hours are from 9 a.m. to noon each day. The cost is \$65 per child for members of the community and \$60 per child for museum members. That includes all supplies and daily refreshments. Classes are limited to 15 children.

During this year's camp, children will learn about the Native Americans of the Northwest Coast. They will create objects such as bent-wood boxes and button blankets, handle authentic artifacts, play games and hear stories. All of these activities will teach us to respect the knowledge and skill that has always been and continues to be the Northwest Coast tradition.

Registration

To register for any of the programs or learn more about them, please contact Myrna Mackin at 758-5282, e-mail moa@wfu.edu or log on to our Web site <http://www.wfu.edu/MOA>

Director **Stephen Whittington** presented a public lecture titled "At the entrance to Xibalbá: illness, trauma, and death among the Maya" at the Mint Museum of Art in Charlotte on October 9. He also presented a paper (in absentia) entitled "The end is near: disease in the low-status population of the Copán state" on November 15 at the 2002 Chacmool Conference in Calgary, Alberta.

In October **Myrna Mackin**, the Museum's administrative assistant, and **Anne Gilmore**, Membership Secretary, attended an advanced Tai Chi workshop in Decatur, Georgia, along with several other members of their local Tai Chi class. While they were there they visited historic Decatur Square and experienced the local Pan-Asian cuisine.

Student assistants in curation **Sarah Cucinella** and **Jill Kovalcik** are both preparing for graduation in May. They are applying to graduate schools and beginning the job search process. Sarah received a student scholarship to attend the North Carolina Museums Council conference in High Point, North Carolina, in November where she learned more about graduate programs in museum studies and basic museum management skills.

If you have access to the Web and have not checked out our recently improved Web site, please visit <http://www.wfu.edu/MOA>. Through the energies of **Mark Vogler** of the WFU Office of Creative Services and **Robert Vidrine**, the Department of Anthropology's Instructional Technology Specialist, the site is now more current, easy to navigate and full of important information.

The new look and name of the newsletter are thanks to the creativity of **Kerry King**, **Jessica Koman** and **Sonya Peterson** of the WFU Office of Creative Services. We hope you like the changes as much as we do!

Join the MOA Friends

Membership benefits include invitations to previews of exhibits and openings; reduced rates for field trips, lecture series, classes and other special events; 10% discount on purchases from the Museum Shop and 25% discount during sales. For more information, call (336) 758.5282 or e-mail moa@wfu.edu

[name(s)] _____

[phone] _____

[mailing address] _____

[city/state/zip] _____

[e-mail] _____

[new] [renewal] [cash] [check] [amount enclosed] _____

Matching Gifts

Are you or your spouse employed by a matching gift company? Many companies and law firms will match your gift. Please obtain the proper form from your employer and return it to us with your gift. THANKS!

My gift will be matched by: _____

and forms are enclosed. (Corporate matching gift of spouse may also qualify.)

Payment

Please make checks payable to the Museum of Anthropology. Return form to Museum of Anthropology, Wake Forest University, P.O. Box 7267, Winston-Salem, NC 27109-7267. Memberships are tax-deductible.

- Student [\$5]
- Individual [\$15]
- Senior Citizen [\$12]
- Teacher [\$15]
Additional Benefit: 10% discount for class programs
- Family [\$20-49]
Additional Benefit: reduced rates for children for after-school and summer programs
- Supporting [\$50-99]
Additional Benefit: Museum Shop note cards, mug or Museum logo soap
- Patron [\$100 & above]
Additional Benefit: the Museum catalogue, A Select Guide to the Collection
- I do not wish to receive any premiums

Dec
21

Dec 21 – Jan 14 /
Wake Forest Intersession
Museum open extra days for "Worldviews"
Jan 2–3, 7–10, 13–14.
Free admission, 10 a.m.–4:30 p.m.

Jan
13

Jan 13 /
After-School Program
"Land of the Hero Twins," a program for
children grades 1–5. Includes a learning activity
and a craft. Pre-register at 336-758-5282.
4:15–5:30 p.m.

Jan
22

Jan 22 /
Department of Anthropology Chair Jeanne
Simonelli will present a lecture on "Mesoamerica
through a Maya Gaze: Three Thousand Years
of Culture and Resistance."
Free admission. 7:30 p.m.

Jan
25

Jan 25 /
"Beneath the Jaguar Sun: A
History of the Maya"
This video describes archeological discoveries,
advances in translating hieroglyphs, and
interpretations of images in art that have led
to a fuller understanding of Maya history.
Free admission. 3 p.m.

Jan
31

Jan 31 /
"Worldviews: Maya Ceramics
from the Palmer
Collection" *exhibit closes.*

Feb
10

Feb 10 /
After-School Program
"Rocks that Speak," a program for children
grades 1–5. Includes a learning activity and
a craft. Pre-register at 336-758-5282.
4:15–5:30 p.m.

Feb
28

Feb 28 /
"Kimono: Constructing a
National Image" *exhibit opens.*

Mar
1

March 1 /
Cherokee storytelling for young and old
with Freeman Owle. Sponsored by MASK.
Free admission. 1 p.m.

Mar
10

March 10 /
After-School Program
"Hanetsuki: A Japanese New Year's Game,"
a program for children grades 1–5. Includes a
learning activity and a craft. Pre-register at
336-758-5282. 4:15–5:30 p.m.

WAKE FOREST
UNIVERSITY

Museum of Anthropology
P. O. Box 7267
Winston-Salem, NC
27109-7267

Non-Profit Organization

U. S. POSTAGE
P A I D

Winston-Salem, NC
Permit No. 69