

Configuring WFU Dial-up Access in Windows XP

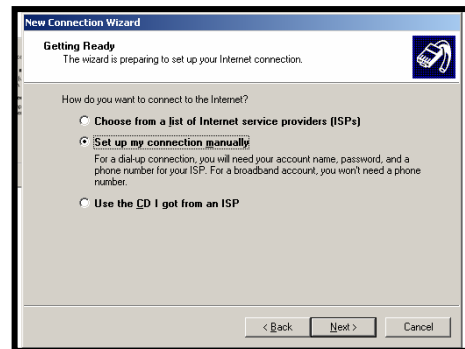
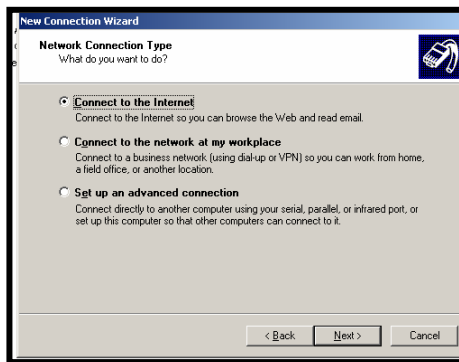
- All faculty and staff will automatically have access to the modem pool.
- To set up the ThinkPad modem to dial the WFU Remote Access Server (RAS), **Right-click** on the **My Network Places** icon on your desktop and select **Properties**.



- Click **Create a new connection** under **Network Tasks** on the left side of the screen **OR**,
- Click **New Connection Wizard** in your list of connections.

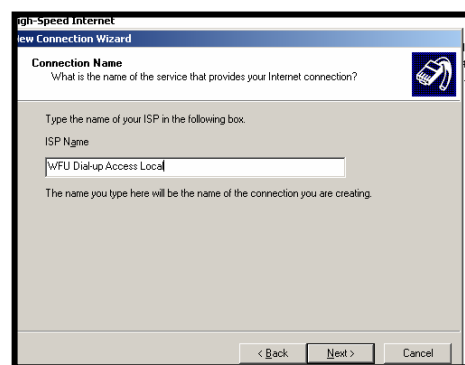
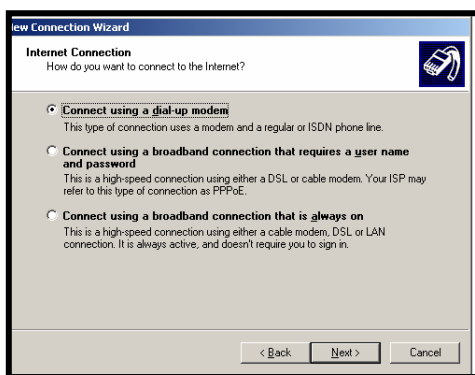


- Click **Next** on the Welcome Screen



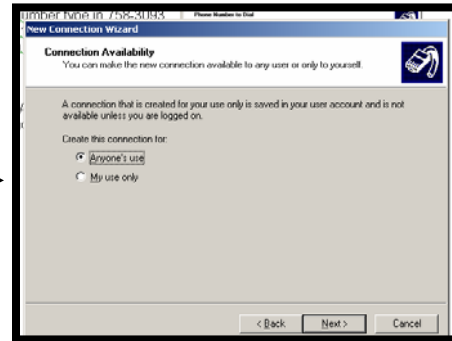
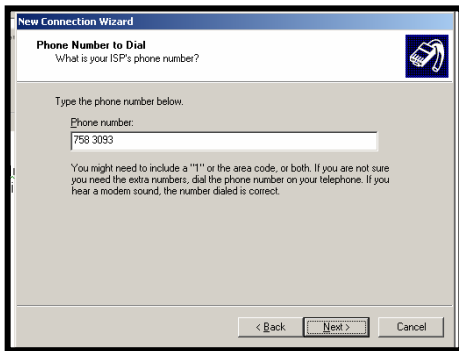
STEP 1: For **Network Connection Type** select **Connect to the Internet** and click **Next**.

STEP 2: For **Getting Ready**, Select **Set up my connection manually** and click **Next**.



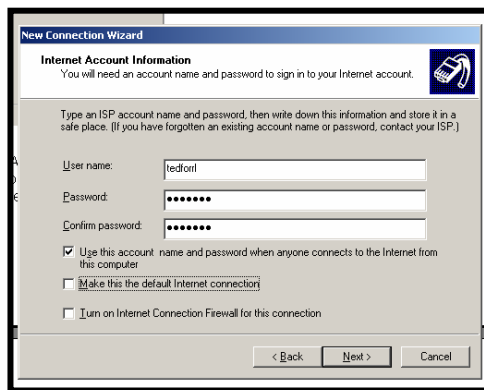
STEP 3: For your **Internet Connection** select **Connect using a dial-up modem** and click **Next**.

STEP 4: For **Connection Name** type in **WFU Dial-up access (local)** or **WFU Dial-up access (long distance)** and click **Next**.



STEP 5: For the **Phone Number** to dial type in **758-3093** for local calls and click **Next**.
(we recommend using iRove for calls outside of the local calling area, contact Carolyn Hall hallcm@wfu.edu for an iRove account)

STEP 6: For **Connection Availability** select **Anyones Use** and click **Next**.



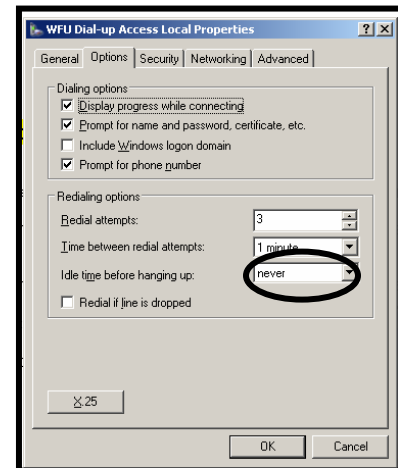
STEP 7: On the Internet Account Information type in your WFU username and password and **UNCHECK** the boxes for making this the default Internet Connection and Using the Firewall and click **Next**.

STEP 8: On the final screen check the box for making a shortcut on your desktop to this connection if you wish and click **Finish**.

Using your WFU Dial-up Connections

TIME LIMITS ON YOUR DIAL-UP CONNECTION: The dial-up server will disconnect you after 1 hour of idle time or after 2 hours of active usage. To keep working you will need to dial in again.

- If you put a shortcut to the connections on your desktop, double-click the connection link.
- If you don't have a shortcut on the desktop go to your **Start Menu > Settings > Network Connections** and double click the connection in that window.
- **NOTE:** Before using your connection the first time, check the default disconnect time by clicking the Properties button on the dialer window and selecting the **Options Tab**.
- Set the Idle time before hanging up to **Never**. You will still be disconnected from the server after 1 hour of idle time.
- Click **OK**.
- If you have call waiting on your phone, add ***70** before the number to call in the dial field to disable it.
- In the box that opens up, for security reasons, **UNCHECK** the box that says **Save this user name and password for the following users**. You will only need to do this the first time you use the connection.
- Type in your password.
- Click **Dial**.



Troubleshooting:

- If you are disconnected before your time is up (1 hour of idle time, 2 hours of active use) you may have forgotten to disable call waiting. Put a *70 in front of the number before you dial.
- If your Username or password gives you an error message, you may have Number Lock set (especially true if you use an external keyboard at work). To disable Number Lock hold down the Shift Key and Hit the ScrLk key just above the F11 key on your keyboard.