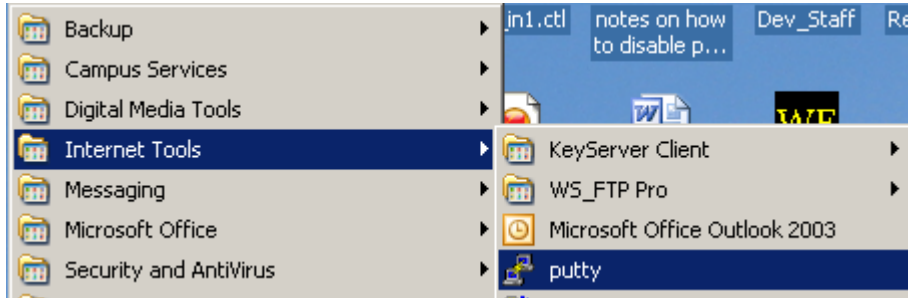


How to Set Up Tunneling for BANPPRD

Tunneling provides an additional security feature that is required in order to use IntelCheck, FormFusion Client, Nolij, and TOAD. This must be done in order to access these applications.

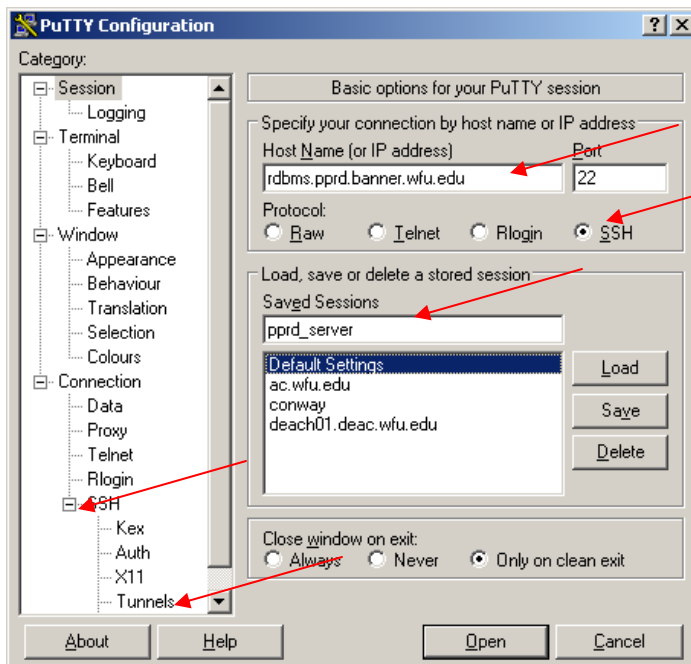
To perform a one-time setup for tunneling, go to:

Start Menu>Internet Tools>PuTTY

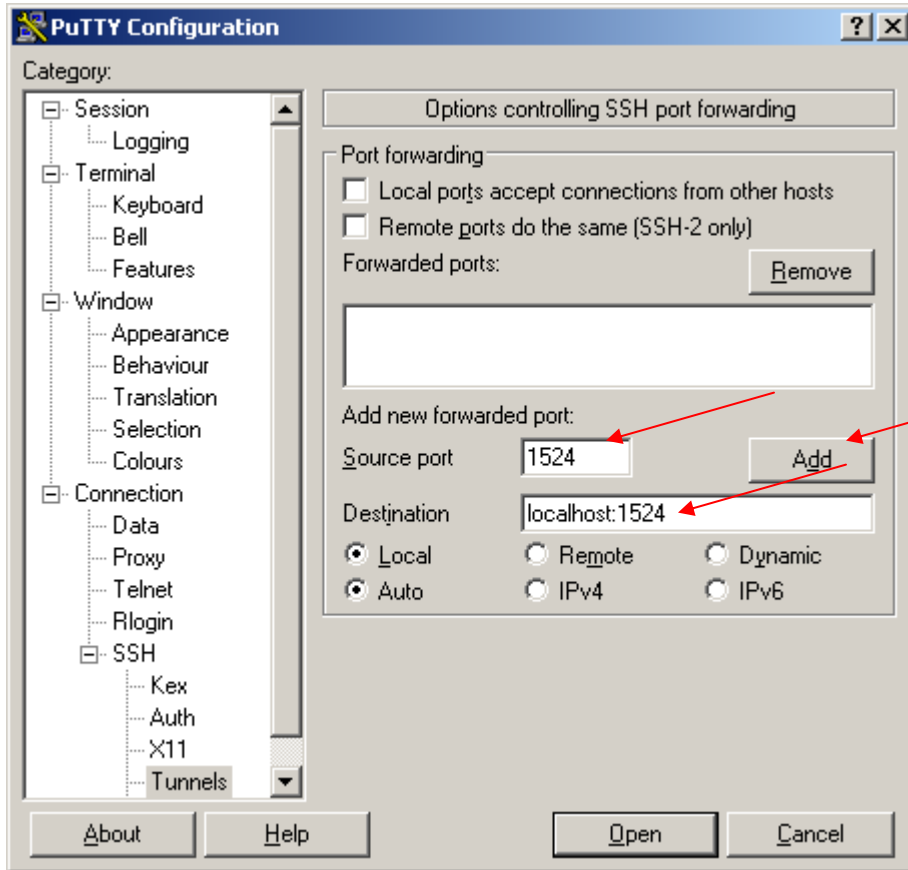


The PuTTY Configuration Box opens.

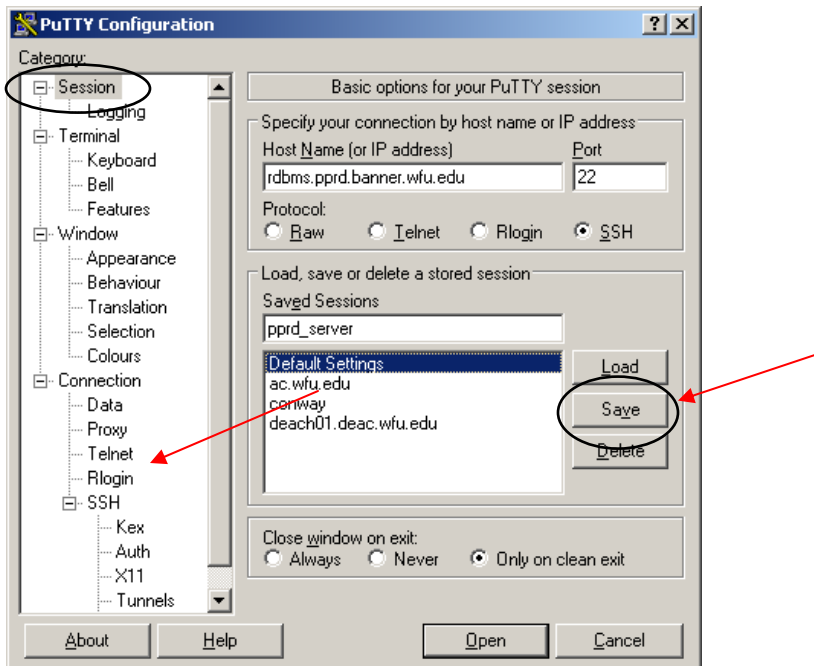
1. Type in the Host Name field: rdbms.pprd.banner.wfu.edu
2. Type Port 22
3. For Protocol make sure SSH is selected
4. In the Saved Sessions box type pprd_server
5. In the left panel, click SSH to expand.
6. Choose Tunnels.



In the Source port box type 1524
In the Destination type localhost:1524
Click add.



Again, in the left panel, click Session.
Click Save (this will save your setting under the pprd_server saved session).



Adding Tnsnames entry (one time set up only)

Tnsnames:

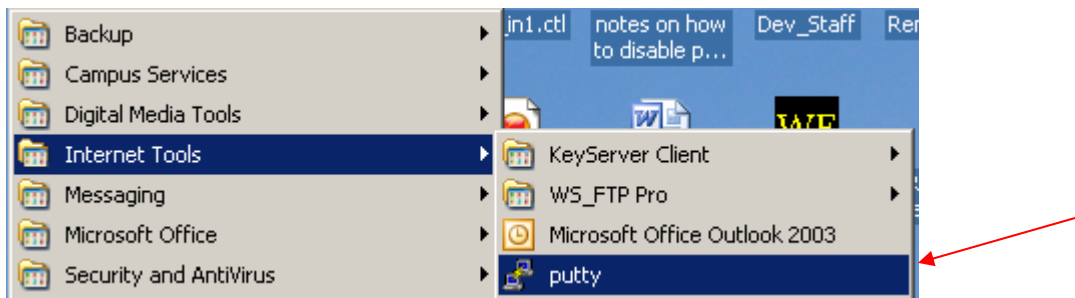
banpprd =

```
(DESCRIPTION =
  (ADDRESS_LIST =
    (ADDRESS = (PROTOCOL = TCP)(HOST = localhost)(PORT = 1524))
  )
  (CONNECT_DATA =
    (SID = BANPPRD)
  )
)
```

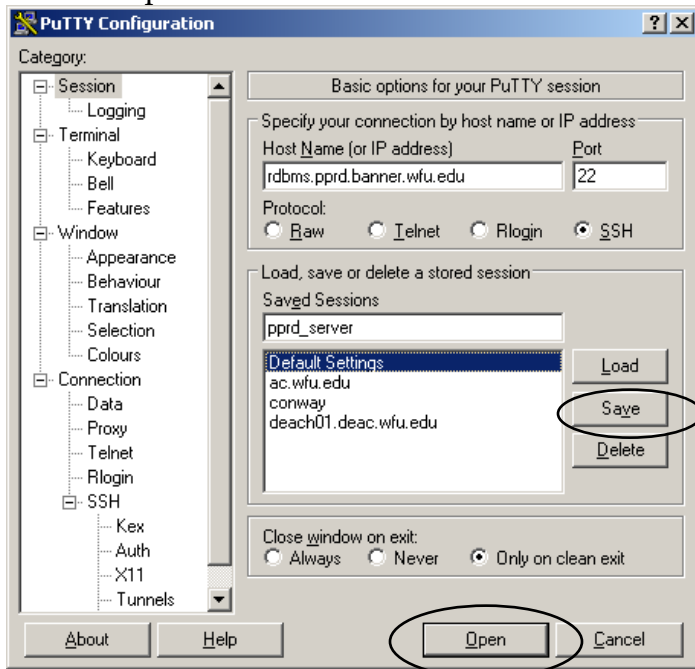
The next steps will need to be done every time you wish to run one of the mentioned applications (INTELLECHECK, NOLIJ, etc.).

1. Start putty

Start Menu>Internet Tools>PuTTY

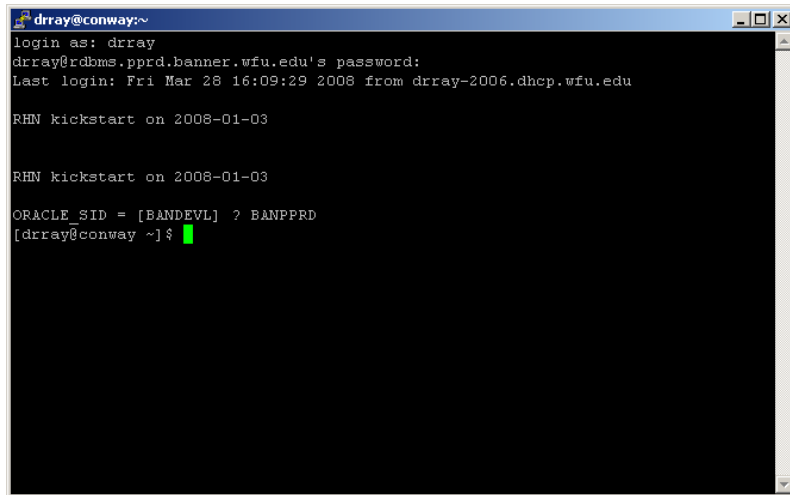


2. Select pprd_server from your SAVED SESSIONS list.
3. Click Load.
4. Click Open.



(Note: You may get a security alert box. Read and click yes to trust the site)

5. A big black box appears.
 - A. Login is your username.
 - B. Press ENTER.
 - C. Password is your network password.
 - D. Press ENTER.
 - E. Beside ORACLE_SID type BANPPRD (*IN UPPER CASE*).
 - F. Press ENTER.

A terminal window titled 'drray@conway:~' with standard window controls. The text inside the terminal is as follows:

```
login as: drray
drray@rdbms.pprd.banner.wfu.edu's password:
Last login: Fri Mar 28 16:09:29 2008 from drray-2006.dhcp.wfu.edu

RHN kickstart on 2008-01-03

RHN kickstart on 2008-01-03

ORACLE_SID = [BANDEVL] ? BANPPRD
[drray@conway ~]$
```

Minimize (do not close) the black box and open your application. PLEASE NOTE THAT THIS BLACK BOX MUST REMAIN OPEN WHILE YOU ARE USING ONE OF THE APPLICATIONS ABOVE. You will lose your connection if you close this black box.

6. You can now start your application (INTELLECHECK, NOLIJ, etc).