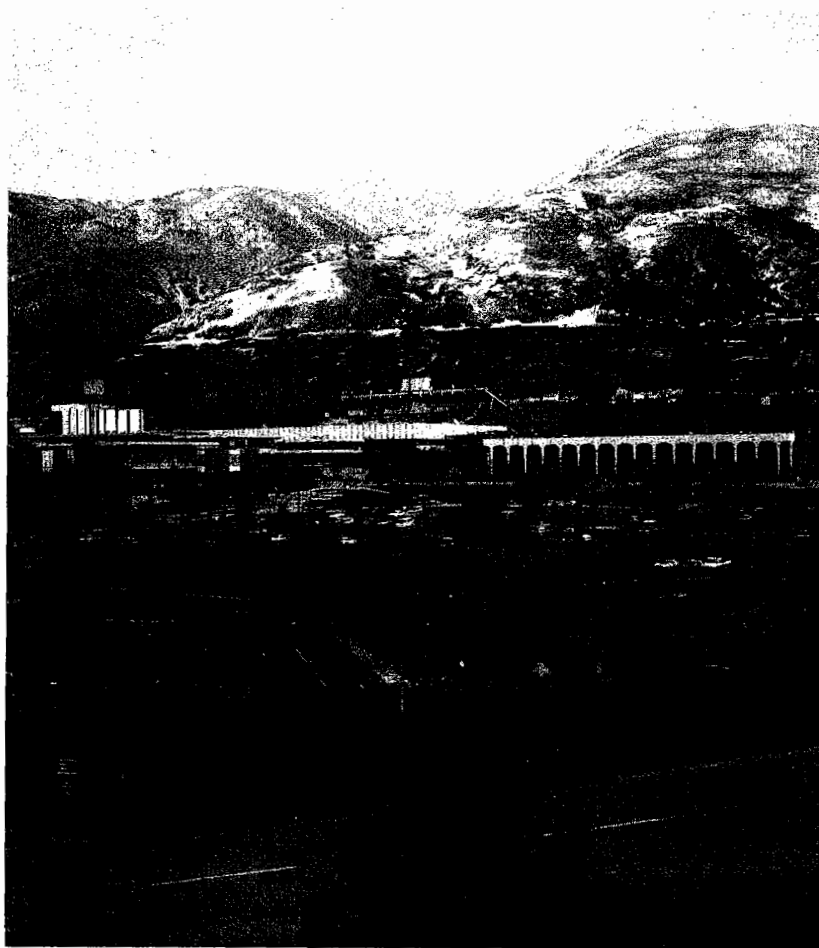


NDT 42nd Annual National Debate Tournament



Hosted by
Weber State College
Ogden, Utah

March 24-28, 1988

1987 National Debate Tournament Results

TOP SPEAKERS

1.	Lyn Robbins	Baylor A	635		
2.	John Culver	Kansas A	622		
3.	Charlie Synn	Harvard A	620		
4.	Cathie Palczewski	Northwestern B	619		
5.	Jeff Leon	Redlands	618		
6.	John Fritch	Nebraska	617		
7.	Spencer Zuzolo	Houston Baptist A	614		
8.	Shaun Martin	Dartmouth B	613	558	
9.	Craig Budner	Dartmouth A	613	557	501 446
10.	Ben Attias	Northwestern A	613	557	501 445
10.	Mark Friedman	Massachusetts	613	557	501 445

QUALIFYING TEAMS

1.	Kansas A	Culver-Lopez	8-0	22	1216
2.	Baylor A	Robbins-Vincent	7-1	22	1244
3.	Dartmouth B	Martin-Wick	7-1	18	1224
4.	Augustana (SD)	Abbott-Voight	7-1	16	1214
5.	Northwestern B	Mitchell-Palczewski	6-2	20	1225
6.	Loyola B	Ferguson-Graham	6-2	17	1202
7.	Redlands	LaFave-Leon	6-2	16	1227
8.	Michigan A	Loshbough-Speta	6-2	16	1215
9.	Nebraska	Fritch-Walker	6-2	16	1214
10.	Georgetown A	Anderson-Rabin	6-2	16	1192
11.	Weber State B	Justman Summers	6-2	15	1190
12.	Michigan B	Green-Schrank	6-2	13	1184
13.	Dartmouth A	Budner-Mahoney	5-3	18	1222
14.	Kansas B	Ellis-Pickens	5-3	17	1207
15.	Baylor B	Giardina-Loeber	5-3	17	1204
16.	Northwestern A	Arthur-Attias	5-3	16	1220
17.	Massachusetts	Friedman-Kinnamon	5-3	16	1203
18.	Houston Baptist A	Ramsey-Zuzolo	5-3	15	1211
19.	Utah	Bsumek-Gabler	5-3	15	1190
20.	Kentucky	Hodges-Kupferberg	5-3	15	1183
21.	Ohio State	Geiger-Schoenstein	5-3	15	1175
22.	West Georgia A	Evans-Sizemore	5-3	14	1193
23.	Emory A	Lowrey-Raider	5-3	14	1181
24.	Central State A	Duke-Glendenning	5-3	14	1176

1987 Elimination Round Results



Tournament Results, 1947 - 1987

YEAR	CHAMPIONS	RUNNERS UP
1947	Southeastern State College W. Scott Nobles and Gerald Sanders Coach: T.A. Houston	University of Southern California Potter Kerfott and George Grover Coach: Alan Nichols
1948	North Texas State College Keith Parks and David Cotton Coach: S.B. McAlister	University of Florida Alan Weston and Gerald Gordon Coach: Wayne Eubank
1949	University of Alabama Oscar Newton and Mitchell Latoff Coach: Annabel D. Hagood	Baylor University Thomas Webb and Joseph Allbritton Coach: Glenn Capp
1950	University of Vermont Richard O'Connell and Thomas Hayes Coach: Robert B. Huber	Augustana College Dorothy Koch and Charles Lindberg Coach: Martin Holcomb
1951	University of Redlands James Wilson and Holt Spicer Coach: E.R. Nichols	Kansas State Teachers College Robert Howard and Robert Kaiser Coach: Charles Master
1952	University of Redlands James Wilson and Holt Spicer Coach: E.R. Nichols	Baylor University John Claypool and Calvin Cannon Coach: Glenn Capp
1953	University of Miami Gerald Kogan and Lawrence Perlmutter Coach: Donald Sprague	College of the Holy Cross Michael McNulty and John O'Connor Coach: Henry J. Murphy, S.J.
1954	University of Kansas William Arnold and Hubert Bell Coach: Kim Giffin	University of Florida Robert Shevin and Larry Sands Coach: Douglas Ehninger
1955	University of Alabama Dennis Holt and Ellis Storey Coach: Anabel D. Hagood	Wilkes College Harold Flannery and James Neveras Coach: Arthur Kruger
1956	United States Military Academy George Walker and James Murphy Coach: Abbott Greenleaf	Saint Joseph's College John Gough and J. Foley Coach: Joseph Erhart, S.J.
1957	Augustana College Norman Lefstein and Phillip Hubbard Coach: Martin Holcomb	United States Military Academy James Murphy and George Walker Coach: Abbott Greenleaf
1958	Northwestern University William Welsh and Richard Kirshberg Coach: Russell R. Windes	Harvard University David Bynum and James Kincaid Coach: Robert O'Neill
1959	Northwestern University William Welsh and Richard Kirshberg Coach: Russell R. Windes	Wisconsin State University at Eau Claire James Shafer and Charles Bush Coach: Grace Walsh
1960	Dartmouth College Anthony Roisman and Saul Baernstein Coach: Herbert L. James	San Diego State College John Raser and Robert Arnheim Coach: John Ackley
1961	Harvard University Laurence Tribe and Gene Clements Coach: James Kincaid	King's College Frank Harrison and Peter Smith Coach: Robert Connelley
1962	Ohio State University Dale Williams and Sarah Benson Coach: Richard Rieke	Baylor University Calvin Kent and Michael Henke Coach: Glenn Capp

Tournament Results, 1947 - 1987

YEAR	CHAMPIONS	RUNNERS-UP
1963	Dartmouth College Frank Wohl and Stephen Kessler Coach: Herbert L. James	University of Minnesota Andre Zdrzil and David Krause Coaches: Robert L. Scott and Donn W. Parson
1964	University of the Pacific Raoul Kennedy and Douglas Pipes Coach: Paul Winters	Boston College Jamers J. Unger and Joseph McLaughlin Coaches: John Lawton and Lee Huebner
1965	Carson-Newman College John Wittig and Barnett Pearce Coach: Forrest Conklin	Northeastern State College David Johnson and Glen Strickland Coach: Valgene Littlefield
1966	Northwestern University Bill Snyder and Mike Denger Coach: Thomas B. McClain	Wayne State University Douglas Frost and Kathleen McDonald Coach: George Ziegelmueller
1967	Dartmouth College Tom Brewer and John Isaacson Coach: Herbert L. James	Wayne State University Don Ritzenheim and Kathleen McDonald Coach: George Ziegelmueller
1968	Wichita State University Robert Shields and Lee Thompson Coach: Quincalee Striegel	Butler University Donald Kiefer and Carl Flaningam Coach: Nicholas Cripe
1969	Harvard University Richard Lewis and Joel Perwin Coach: Laurence Tribe	University of Houston David Seikel and Michael Miller Coach: William B. English
1970	University of Kansas Robert McCulloh and David Jeans Coaches: Donn W. Parson and Jackson Harrell	Canisius College David Goss and David Wagner Coach: Bert Goss
1971	University of California, Los Angeles Don Hornstein and Barrett McInerney Coach: Patricia B. Long	Oberlin College Scott Lassar and Joe Misner Coach: Larry E. Larmer
1972	University of California, Santa Barbara Mike Clough and Mike Fernandez Coach: Kathy Corey	University of Southern California Ron Palmieri and Dennis Winston Coach: John C. DeBross
1973	Northwestern University Elliot Minberg and Ron Marmer Coach: David Zarefsky	Georgetown University Bradley Ziff and Stewart Jay Coach: James J. Unger
1974	Harvard University Greg A. Rosenbaum and Charles E. Garvin Coach: Mark Arnold	Augustana College Bob Feldhake and Rick Godfrey Coach: Dan Bozik
1975	Baylor University Jay Hurst and David Kent Coach: Lee Polk	University of Redlands Greg Ballard and Bill Smelko Coach: William Southworth
1976	University of Kansas Robin Rowland and Frank Cross Coaches: Donn W. Parson and Bill Bathrop	Georgetown University Charles Chafer and David Ottoson Coach: James J. Unger
1977	Georgetown University John Walker and David Ottoson Coach: James J. Unger	University of Southern California Leslie Sherman and Steven Combs Coaches: John C. DeBross and Lee Garrison
1978	Northwestern University Mark Cotham and Stuart Singer Coach: G. Thomas Goodnight	University of Southern California Steven Combs and Jon Cassanelli Coaches: John C. DeBross and Lee Garrison

Tournament Results, 1947 - 1987

YEAR	CHAMPIONS
1979	Harvard University Michael B. King and John M. Bredehoft Coaches: Charles E. Garvin and Greg A. Rosenbaum
1980	Northwestern University Don Dripps and Tom Fulkerson Coach: G. Thomas Goodnight
1981	University of Pittsburgh Michael Alberty and Stephen Marzen Coach: Thomas Kane
1982	University of Louisville Dave Sutherland and Dan Sutherland Coach: Tim Hynes
1983	University of Kansas Mark Gidley and Rodger Payne Coach: Donn W. Parson
1984	Dartmouth College Leonard Gail and Mark Koulogeorge Coaches: Herbert L. James, Ken Strange, & Tom Lyon
1985	Harvard University Jonathan Massey and Ed Swaine Coaches: Dallas Perkins and Johnathan Wiener
1986	University of Kentucky David Brownell and Ouita Papka Coaches: J.W. Patterson and Roger Solt
1987	Baylor University Lyn Robbins and Griffin Vincent Coaches: Robert Rowland, David B. Hingstman, Cary Voss, Bob Gilmore, and Mark Dyer

RUNNERS-UP
Northwestern University Don Dripps and Mark Cotham Coach: G. Thomas Goodnight
Harvard University John M. Bredehoft and William C. Foutz Coaches: Dallas Perkins and L. Jeffrey Pash
Dartmouth College Cy Smith and Mark Weinhardt Coaches: Herb James and Ken Strange
University of Redlands Bill Isaacson and Jeff Wagner Coach: William Southworth
Dartmouth College Robin Jacobsohn and Tom Lyon Coaches: Herbert L. James, Ken Strange, and Steve Mancuso
University of Louisville Cindy Leiferman and Mark Whitehead Coach: Tim Hynes
University of Iowa Robert Garman and Karla Leeper Coaches: Robert Kemp, Dale Herbeck, Greg Phelps, and John Katsulas
Georgetown University Michael Mazarr and Stuart Rabin Coach: Greg Mastel
Dartmouth College Craig Budner and Chrissy Mahoney Coaches: Herbert L. James, Ken Strange, David Rhaesa, and Erik Jaffe



1987 NDT WINNERS
Coach Robin Rowland,
Griffin Vincent, Lyn Robbins



RUNNERS-UP 1987
David Zarefsky presents trophy to Craig Budner and
Chrissy Mahoney; Coaches Erik Jaffe, Ken Strange,
David Rhaesa

Tournament Facts, 1967 - 1987

1967
Site: University of Chicago
Host: Richard L. LaVarnway & Thomas B. McClain
Director: Stanley G. Rives

1968
Site: Brooklyn College
Host: Charles E. Parkhurst
Director: Richard D. Rieke

1969
Site: Northern Illinois University
Host: M. Jack Parker
Director: Roger Hufford

1970
Site: University of Houston
Host: William B. English
Director: David Matheny

1971
Site: Macalester College
Host: W. Scott Nobles
Director: John C. Lehman

1972
Site: University of Utah
Host: Jack Rhodes
Director: John C. Lehman

1973
Site: U.S. Naval Academy
Host: Philip Warken
Director: Merwyn A. Hayes

1974
Site: U.S. Air Force Academy
Host: David Whitlock
Director: Merwyn A. Hayes

1975
Site: University of the Pacific
Host: Paul Winters
Director: Michael David Hazen

1976
Site: Boston College
Host: Daniel M. Rohrer
Director: Michael David Hazen

1977
Site: Southwestern Missouri State University
Host: Rita Rice Flaningam
Director: Michael David Hazen

1978
Site: Metropolitan State College, Denver
Host: Gary Holbrook
Director: Michael David Hazen

1979
Site: University of Kentucky
Host: J.W. Patterson
Director: Michael David Hazen

1980
Site: University of Arizona
Host: Tim A. Browning
Director: Michael David Hazen

1981
Site: California Polytechnic
State University, Pomona
Host: Robert Charles
Director: Michael David Hazen

1982
Site: Florida State University
Host: Marilyn J. Young
Director: Michael David Hazen

1983
Site: Colorado College
Host: James A. Johnson
Director: Michael David Hazen

1984
Site: University of Tennessee
Host: Russell Taylor Church
Director: David Zarefsky

1985
Site: Gonzaga University
Host: Darrell Scott and Joan Archer-Cronin
Director: David Zarefsky

1986
Site: Dartmouth College
Host: Herbert L. James
Director: David Zarefsky

1987
Site: Illinois State University
Host: Arnie Madsen
Director: David Zarefsky



The Deciding Ballot

NDT Participants, 1947 - 1988

- Abilene Christian College: 55, 56, 57, 58, 61, 65, 69, 70
University of Alabama: 48, 49, 50, 53, 54, 55, 56, 60, 61, 63, 64, 66, 71, 73, 75, 76, 77, 78, 79
Albion College: 67, 69
American University: 61
University of Arizona: 49, 50, 69, 76, 77, 78, 79, 80, 81, 82, 83, 84, 85
Arizona State University: 47, 67, 87, 88
University of Arkansas: 50
Auburn University: 85, 86
Augustana College (Illinois): 47, 48, 49, 50, 51, 52, 53, 54, 55, 56, 57, 58, 59, 60, 64, 66, 67, 68, 70, 71, 73, 74, 75, 76, 77, 78, 79, 80, 81, 87, 88
Augustana College (South Dakota): 76, 77, 78, 79, 80, 81, 82, 83, 84, 85, 87
Bates College: 48, 76, 77, 78, 79, 80, 81, 82, 83, 84, 85, 86, 87, 88
Baylor University: 48, 49, 50, 51, 52, 53, 55, 56, 60, 61, 62, 64, 67, 69, 71, 74, 75, 76, 77, 78, 79, 81, 82, 83, 84, 85, 86, 87, 88
Boston College: 62, 63, 64, 65, 67, 68, 69, 70, 71, 72, 74, 75, 79, 87, 88
Boston University: 60, 73, 74, 75
Bowling Green State University: 50, 51, 70, 75, 76, 78
Bradley University: 51, 69, 79
Brandeis University: 65, 67
Brigham Young University: 55, 56, 60, 62, 63, 66, 78
Brooklyn College: 61
Brown University: 69, 70, 72
Butler University: 59, 61, 67, 68, 80, 81, 83, 88
University of California at Berkeley: 68, 77, 81
University of California at Los Angeles: 48, 54, 66, 68, 69, 70, 71, 72, 73, 74, 75, 76, 78
University of California at Santa Barbara: 64, 71, 72, 73, 75
California State University, Fullerton: 70, 71, 72, 73, 75, 76, 77, 78, 80, 83, 85, 86, 87, 88
California State University, Los Angeles: 55, 56, 61, 66, 73, 76
California State University, Northridge: 65, 67, 68, 72, 74
California State University, Sacramento: 74, 75, 76, 77, 78, 79, 81, 82
California State University, San Diego: 49, 52, 53, 54, 55, 56, 57, 58, 59, 60, 61, 62, 63, 72
Canisius College: 69, 70, 71, 72, 73, 74, 77, 78, 79
Capital University: 48, 73, 74
Carson-Newman College: 64, 65, 66
Case Institute of Technology: 73
Catholic University: 73, 74, 75, 76, 77, 78
University of Central Florida (Florida Tech): 76, 78, 79, 80, 81, 83
Central Michigan University: 74, 76, 83, 85, 86, 88
Central Oklahoma State University: 52, 53, 54, 56, 61, 63, 72, 73, 85, 86, 87
Champlain College: 49
University of Chicago: 48, 49
Claremont McKenna (Men's) College: 78, 79, 80, 81, 82, 83, 84, 85, 87
Coe College: 48
Colgate University: 51
Colorado College: 75, 77, 79
University of Colorado: 47, 48
Concordia College: 67, 68, 73, 87, 88
Cornell University: 76
Dartmouth College: 48, 51, 54, 55, 56, 57, 58, 59, 60, 61, 63, 64, 65, 66, 67, 68, 69, 70, 71, 72, 73, 75, 76, 77, 78, 79, 80, 81, 82, 83, 84, 85, 86, 87, 88
David Lipscomb College: 55
University of Denver: 54, 67, 68, 69, 70, 85
DePaul University: 48, 49, 51, 57
University of Detroit: 67
Drury College: 72, 80
Duke University: 56, 57, 58, 61
Eastern Illinois University: 71, 74, 75, 76, 77, 78, 79, 80, 81, 82, 83, 84, 85, 86, 88
Eastern Nazarene College: 58, 60, 61
Emory University: 65, 66, 67, 68, 70, 71, 72, 77, 78, 81, 82, 83, 84, 85, 86, 87, 88
Emporia State University: 51, 53, 58, 59, 60, 61, 63, 65, 66, 69, 70, 73, 74, 76, 77, 80, 81, 82
Fairmont State College: 76, 78
University of Florida: 48, 50, 51, 52, 53, 54, 55, 56, 57, 59, 62, 68, 69, 70
Florida State University: 75
Fordham University: 57, 59, 66
Fordham University School of Education: 58, 59, 61
Fort Hays State College: 61
George Mason University: 74, 75, 80, 84, 85, 86, 87, 88
George Pepperdine College: 49, 50, 51, 52, 53
George Washington University: 49, 51, 52, 54, 58, 59, 60, 62, 63, 64, 65, 66, 68, 69, 70, 71, 72, 73, 76, 81, 82, 83, 88
Georgetown College: 49
Georgetown University: 49, 52, 56, 61, 62, 63, 64, 65, 66, 67, 70, 71, 72, 73, 74, 75, 76, 77, 78, 79, 80, 81, 82, 83, 84, 85, 86, 87, 88
University of Georgia: 67, 68, 69, 70, 71, 72, 73, 74, 75, 76, 77
Georgia State University: 84, 85, 86, 88
Gonzaga University: 47, 48, 59, 60, 62, 72, 73, 75, 76, 77, 79, 80, 81, 82, 85, 86, 87
Greenville College: 56
Harvard University: 50, 54, 55, 56, 57, 58, 59, 60, 61, 62, 63, 64, 65, 66, 67, 68, 69, 70, 71, 72, 73, 74, 75, 76, 77, 78, 79, 80, 81, 82, 83, 84, 85, 86, 87, 88
Hiram College: 52
College of the Holy Cross: 48, 51, 52, 53, 54, 62, 63
University of Houston: 51, 53, 55, 56, 57, 58, 59, 67, 68, 69, 70, 71, 72, 73, 74, 75, 76, 77, 78, 82, 83
Houston Baptist University: 87
Howard University: 52, 54
University of Idaho: 53, 57, 61
Idaho State University: 53, 57, 61
University of Illinois, Chicago Circle: 52, 53, 54, 56, 58, 64, 65
Illinois College: 54
Illinois State University: 52, 54, 55, 62, 63, 72, 73, 81
Indiana State University: 47, 73
University of Iowa: 72, 73, 75, 77, 78, 80, 81, 83, 84, 85, 86, 87, 88
Iowa State University: 52, 71, 74, 82, 83, 84
James Madison University: 79, 80, 81, 82, 83, 84, 86, 87, 88
John Carroll University: 78, 80, 81
John Hopkins University: 77, 78, 79
University of Kansas: 48, 49, 50, 51, 52, 53, 54, 55, 56, 57, 58, 59, 60, 63, 64, 66, 68, 69, 70, 71, 72, 73, 74, 75, 76, 77, 78, 79, 80, 81, 82, 83, 84, 85, 86, 87, 88
Kansas State College of Pittsburgh: 61, 63, 67
Kansas State University: 55, 64, 75, 76, 77, 83
University of Kentucky: 60, 64, 67, 68, 73, 74, 75, 76, 77, 78, 79, 80, 81, 82, 84, 85, 86, 87, 88
Kent State University: 51
King's College: 59, 60, 61, 63, 67, 68, 77, 83
University of La Verne: 88
Lewis and Clark College: 64, 66, 67, 71, 75, 76, 77, 78, 80
Louisiana College: 47, 48, 49, 53, 54
University of Louisville: 79, 80, 81, 82, 83, 84, 85, 86, 87, 88
Loyola-Marymount University: 62, 63, 64, 65, 67, 68, 69, 70, 71, 72, 73, 74, 76, 77, 78, 80, 81, 82, 83, 84, 85, 86, 87, 88
Loyola University (Chicago): 60, 70, 72
Luther College: 50
Macalaster College: 56, 61, 71, 73, 74, 75, 76, 77, 78, 79, 80, 81, 82, 84, 85, 86, 87
Marietta College: 59
Marquette University: 58, 69
University of Maryland: 67
University of Massachusetts: 73, 74, 75, 76, 77, 78, 79, 80, 81, 82, 83, 84, 85, 86, 87, 88
Massachusetts Institute of Technology: 48, 49, 56, 57, 58, 62, 63, 64, 66, 68, 69, 71, 73, 74, 75, 76, 79
Mercer University: 78, 79, 80, 81, 82, 83, 84, 87
University of Miami (Florida): 52, 53, 54, 55, 57, 58, 59, 60, 61, 62, 63, 66, 68, 69, 74
Miami University (Ohio): 76, 80, 81, 87, 88
University of Michigan: 71, 72, 76, 77, 87, 88
Michigan State University: 53, 66, 68, 69
Middlebury College: 55
Middle Tennessee State University: 70, 72, 77
Midland College: 53
Midwestern College: 69
University of Minnesota: 62, 63, 64, 65, 66, 67, 73, 82, 83
University of Mississippi: 47, 51, 52
University of Missouri, Columbia: 68, 71, 72
University of Missouri, Kansas City: 61, 62, 66, 68
University of Montana: 49, 50, 51
Montana State University: 51, 60
Morehead State University: 77, 78, 79, 80
Mount Mercy College: 53
Nebraska State College at Kearney: 65, 66
Nebraska Wesleyan University: 51, 52, 54, 55
University of Nebraska, Lincoln: 80, 83, 86, 87
University of Nebraska, Omaha: 77
University of Nevada: 48

NDT Participants, 1947 - 1988

University of New Hampshire: 71
University of New Mexico: 51, 52, 54, 85
State University of New York, Collge at Genesco: 53
Northeastern Oklahoma State University: 62, 63, 64, 65, 66, 67, 68, 69, 70, 72, 73, 81, 82, 84, 85
Northern Arizona University: 87, 88
Northern Illinois University: 65
University of Northern Michigan: 75
North Texas State University: 48, 49, 59, 62, 63, 64, 65, 66, 79, 83, 84, 85, 86, 87, 88
Northwest Missouri State University: 79, 80, 82
Northwestern College (Minnesota): 63
Northwestern University: 47, 49, 50, 54, 55, 58, 59, 60, 62, 65, 66, 67, 68, 69, 70, 71, 72, 73, 74, 75, 76, 77, 78, 79, 80, 82, 83, 84, 85, 86, 87, 88
University of North Carolina: 71, 72, 73, 74, 75, 77, 80, 81, 82, 83, 84, 85, 86, 88
University of North Dakota: 79
University of Northern Colorado: 71, 74, 75
University of Northern Iowa: 74, 75, 81, 82, 83, 84, 85, 86, 87, 88
University of Notre Dame: 47, 48, 49, 50, 51, 52, 53, 55, 56, 57, 58, 65, 78
Oberlin College: 68, 69, 70, 71, 72
Occidental College: 53
Odessa College: 81, 82, 86, 87
Ohio University: 70, 71, 72, 74, 75, 77, 79, 82
Ohio State University: 47, 52, 60, 61, 62, 63, 67, 68, 69, 70, 71, 86, 87
University of Oklahoma: 57, 58, 59, 60, 61, 63, 64
Oklahoma Baptist University: 77
Oklahoma City University: 65
Oklahoma State University: 68, 69, 70
University of Oregon: 60, 61, 62, 63, 64, 65, 66, 67, 68, 69, 73, 75, 82, 84
Oregon State University: 47, 48, 54, 63, 64
Ottawa University: 49
Pace University: 75, 81, 83, 84, 87
University of the Pacific: 58, 61, 64, 65, 68, 69, 71, 72, 76
Pacific Lutheran University: 52, 56, 62, 72, 82, 83, 84
Pacific University: 49, 55, 56, 57, 65, 73
University of Pennsylvania: 49, 50, 51, 54, 57, 58, 59, 60, 65, 66, 87
Pennsylvania State University: 47, 50, 52, 55
Phillips University: 49
University of Pittsburgh: 53, 56, 60, 62, 64, 66, 67, 70, 71, 72, 73, 74, 75, 76, 79, 80, 81, 82, 83, 85, 86, 87, 88
Princeton University: 51, 53, 56, 57, 59, 61
University of Puget Sound: 56, 57
Purdue University: 47, 48, 50, 60, 61, 62
University of Redlands: 50, 51, 52, 57, 58, 59, 62, 64, 65, 69, 72, 73, 74, 75, 76, 77, 79, 80, 81, 82, 83, 84, 85, 86, 87, 88
University of Rhode Island: 73
Rice University: 57
University of Richmond: 56, 62, 65, 76
Roanoke College: 50
Rockhurst College: 62, 64
Rutgers University: 47, 68, 71, 73, 74
Saint Anselm's College: 56, 59, 64, 68, 69, 71, 72
Saint John's University: 53, 54, 62, 63, 64
Saint Joseph's College: 55, 56, 57, 59, 67
Saint Martin's College: 51, 53, 59
Saint Mary's College: 49
Saint Olaf College: 48, 49, 51, 52, 53, 57, 62, 63
Saint Peter's College: 51, 53, 55, 57, 59, 62
College of Saint Thomas: 47
Samford University: 73, 74, 75, 78, 79, 80, 81, 82, 83, 84, 85, 86, 87, 88
University of San Francisco: 58
San Jacinto College: 86
San Joaquin Delta College: 80, 81
University of Scranton: 61
Seton Hall University: 60, 72, 73, 79, 83, 85
Smith College: 52
University of South Carolina: 50, 51, 54, 56, 57, 58, 59, 60, 61, 62, 63, 64, 66, 67, 68
University of South Dakota: 67, 68, 75
South Dakota State College: 54
Southeast Oklahoma State University: 47, 48, 49, 50, 59, 73, 74, 76
University of Southern California: 47, 48, 50, 51, 52, 54, 57, 58, 59, 60, 61, 63, 64, 65, 67, 68, 69, 70, 71, 72, 73, 74, 75, 76, 77, 78, 79, 80, 81, 82, 83, 84, 85, 86, 87, 88
Southern Illinois University: 57, 58, 60, 62, 63, 70, 88
Southern Methodist University: 50, 52, 87, 88
University of Southern Mississippi: 65, 66
Southern Oregon College: 67
Southern Utah State College: 82, 83, 84, 85
Southwest Missouri State University: 52, 55, 57, 59, 60, 62, 63, 65, 69, 70, 71, 72, 73, 74, 75, 77, 78
Southwest Texas State University: 88
Southwestern College: 56, 57, 78, 79, 80, 81
University of Southwestern Louisiana: 76, 77, 78, 79
Stanford University: 49
Stevens Institute of Technology: 49
Stonehill College: 67, 68
Suffolk University: 81, 82, 83, 84
Swarthmore College: 48
Temple University: 49
University of Tennessee: 50, 51, 79
Tennessee Polytechnic Institute: 62
University of Texas, Arlington: 77, 78, 80, 82
University of Texas, Austin: 47, 60, 71, 72, 84, 86, 87, 88
Texas A&M University: 81, 82, 84, 85, 87, 88
Texas Christian University: 47, 48, 51, 60, 62, 66, 67, 75, 76
Texas Technological College: 68, 70, 73
University of the South: 49
University of Toledo: 71, 72
Union College and University: 55
United States Air Force Academy: 59, 60, 76, 77, 78, 79
United States Merchant Marine Academy: 52, 53, 59
United States Military Academy: 47, 48, 49, 50, 51, 52, 53, 54, 55, 56, 57, 58, 59, 60, 61, 62, 63, 64, 66, 77, 80
United States Naval Academy: 47, 48, 49, 50, 58, 64, 65, 70, 72, 78, 80, 85, 87, 88
University of Utah: 47, 48, 50, 51, 52, 72, 73, 75, 76, 77, 78, 79, 80, 81, 82, 83, 84, 85, 86, 87, 88
Utica College: 50, 51
Vanderbilt University: 76, 77, 78, 80
University of Vermont: 47, 48, 50, 51, 53, 54, 55, 56, 57, 60, 61, 62, 64, 65, 66, 84, 85, 86, 88
University of Virginia: 47, 63, 67, 68, 81
Wabash College: 55
Wake Forest University: 47, 48, 50, 51, 52, 53, 54, 55, 56, 59, 63, 64, 70, 71, 73, 74, 75, 76, 77, 78, 80, 81, 82, 83, 84, 86, 87, 88
Washburn University: 56, 58, 64, 65, 66, 72, 86, 87, 88
Washington and Lee University: 63, 68, 69
University of Washington: 55, 68
Washington State University: 47, 50, 54, 58, 66, 69, 70, 76
Wayne State University: 58, 61, 63, 64, 65, 66, 67, 68, 69, 71, 72, 73, 77, 78, 79, 80, 81, 82, 83, 84, 85, 86, 87, 88
Weber State College: 81, 86, 87, 88
Wesleyan University: 50, 52
West Georgia College: 73, 74, 75, 76, 77, 78, 79, 80, 81, 82, 83, 84, 85, 86, 87, 88
West Virginia University: 55, 64, 74, 79, 81, 85, 86
West Virginia Wesleyan College: 75, 77
Western Illinois University: 71, 73, 80, 82, 85
Western Michigan University: 63, 64
Western Reserve University: 66
Western Washington University: 74, 78, 80, 81, 83, 85, 86
Wheaton College: 47, 59, 63
Whitman College: 50, 51, 52, 53, 54, 55, 58, 59
Whittier College: 71
Wichita State University: 48, 64, 67, 68, 77, 79
William Jewell College: 60, 61
College of William and Mary: 56, 68, 69, 73, 74, 84
University of Wisconsin at Eau Claire: 50, 51, 53, 54, 55, 56, 57, 58, 59, 73, 76, 78, 79
Wilkes College: 54, 55, 57, 58
Williamette University: 48, 49, 51, 52, 55, 58, 59, 61
College of Wooster: 73, 79, 81, 83
University of Wyoming: 67, 68, 70, 71, 72, 73, 74, 75, 76, 77, 78, 81, 82, 83, 84, 86
Xavier University: 50, 53, 54, 55, 56, 57, 58, 59
Yale University: 47, 49

Participating Teams and Coaches

IN MEMORIAM

David James Macdonald
Junior, University of Kansas
Dec. 30, 1966 - Oct. 30, 1987

Samford University

Rex Copeland
Allegra Jordan
Coaches: Bill Slagle and Rob Ballard

Wake Forest University "A"

Gloria Cabada
Alan Coverstone
Coaches: Allan Loudon and Ross Smith

Wake Forest University "B"

Judd Kimball
Ted Tyson
Coaches: Allan Loudon and Ross Smith

West Georgia College

Tom Cramer
Alfred Evans
Coaches: Chester Gibson and Michael Bryant

DISTRICT VII

George Mason University "A"

Leonard Bennett
Allen Stewart
Coach: Warren D. Decker

George Mason University "B"

Edward Lang
Laura Tuell
Coach: Warren D. Decker

George Washington University

Glenn Greenwald
Chris Owen
Coach: Steven Keller

Georgetown University "A"

Marc Stahl
Bill Mabe
Coach: David Cheshier

Georgetown University "B"

Casey Anderson
John Garcia
Coach: David Cheshier

James Madison University

M. Jeff Euchler
J. Robert Russell
Coach: Roger A. Soenksen

United States Naval Academy "A"

Ted Dempsey
James Reining
Coach: Phil Warken

United States Naval Academy "B"

Gary Bruce
Pierre Kennedy
Coach: Phil Warken

University of Pittsburgh "A"

Karl Craver
Jarle Crocker
Coach: Cori Dauber

University of Pittsburgh "B"

Frank Bender
Holly Johnston
Coach: Cori Dauber

DISTRICT VIII

Bates College

Chris Janak
Brad Stratton
Coaches: Bob Branham and Paul Rosenthal

Boston College

Lisa Ameden
Chris Gasset
Coaches: Dale Herbeck and John Katsulas

Dartmouth College "A"

Shaun Martin
Rob Wick
Coaches: Herb James, Ken Strange, John Culver, and Jeff Leon

Dartmouth College "B"

Rali Pulis
Ernie Young
Coaches: Herb James, Ken Strange, John Culver, and Jeff Leon

Harvard University "A"

David Coale
Chris Decker
Coaches: Dallas Perkins and Sherry Hall

Harvard University "B"

Samuel Cooper
Matthew Schnall
Coaches: Dallas Perkins and Sherry Hall

University of Massachusetts

Mark Friedman
Stacey Kinnamon
Coach: Joe Willmore

University of Vermont

Todd Fenton
Dianne King
Coaches: Alfred C. Snider III and David M. Berube

DISTRICT IX

Arizona State University

Steve McDaniel
Joel Sannes
Coaches: Clark Olson and Vince Meldrum

Northern Arizona University

Jerry Burns
Tim Casey
Coaches: Sharon Porter, David Riek, and Paula Phillips

University of Utah "A"

Brooks Amiot
Todd Gabler
Coaches: Duane Fish, Chris McMahon, Bill Cue, Reggie Twigg, and Pete Bsumek

University of Utah "B"

Paul Hansen
Lisa Hobbs
Coaches: Duane Fish, Chris McMahon, Bill Cue, Reggie Twigg, and Pete Bsumek

Weber State College "A"

Tony Justman
Jim Summers
Coaches: Pierre Heidrich, Lynn Bearden, Susan Malone, and Chip Cox

Weber State College "B"

Howard Allen
Lisa Johnson
Coaches: Pierre Heidrich, Lynn Bearden, Susan Malone, and Chip Cox

Participating Teams and Coaches

University of Northern Iowa "B"

Brad Ellwanger

Al Kratz

Coaches: Bill Henderson and Neil Phillips

DISTRICT V

Augustana College

Christopher Townsend

Craig Trepanier

Coaches: David Snowball and Steve Anderson

Butler University

Jim Cherney

Brian Murray

Coach: Ralph Carbone

Central Michigan University

David Heiss

Bruce Straight

Coach: David Pelham

Eastern Illinois University "A"

Jim Conley

Jay Zuzevich

Coach: Terry West

Eastern Illinois University "B"

Jerry Sheehan

Shelly Spelbring

Coach: Terry West

Illinois State University

Paul Cash

Andrew Reisman

Coach: Robert Chandler

Miami University

Franke LaSalle

Noell Tin

Coaches: Jack Rhodes, Lyn Cone, Kent Ono, and Barb Wimpee

University of Michigan "A"

Michael Green

Andrew Schrank

Coach: Steve Mancuso

University of Michigan "B"

Denise Loshbough

Jim Speta

Coach: Steve Mancuso

Northwestern University "A"

Ben Attias

Gordon Mitchell

Coaches: Charles Kauffman, Arnie Madsen, Eric Gander, Scott

Deatherage, and Cathie Palczewski

Northwestern University "B"

Scott Maberry

Dani Reiter

Coaches: Charles Kauffman, Arnie Madsen, Eric Gander, Scott Deatherage, and Cathie Palczewski

Southern Illinois University

John Lapham

Scott Parsons

Coach: Jeffrey T. Bile

Wayne State University "A"

Dean Groulx

Scott Thomson

Coaches: George Ziegelmueller and Ben Biermann

Wayne State University "B"

Sydne Kasle

Michael Warren

Coaches: George Ziegelmueller and Ben Biermann

DISTRICT VI

Emory University "A"

Frank Lowrey

Gus Puryear

Coaches: Melissa Wade and Bill Newnam

Emory University "B"

Joe Bellon

Drew Dowell

Coaches: Melissa Wade and Bill Newnam

Georgia State University

Kevin Fillion

Frank Seaver

Coach: Rich Edwards

University of Kentucky "A"

Scott Hodges

T.A. McKinney

Coaches: J.W. Patterson and Roger Solt

University of Kentucky "B"

Calvin Rockefeller

David Walsh

Coaches: J.W. Patterson and Roger Solt

University of Louisville "A"

Mike Greco

Russ Rogers

Coaches: Scott Harris and Shelley Clubb

University of Louisville "B"

Ted Bixby

John Delicath

Coaches: Scott Harris and Shelley Clubb

University of North Carolina

Geoffrey Burgess

Bryan Wells

Coach: Bill Balthrop

Participating Teams and Coaches

DISTRICT I

California State University, Fullerton

Jon Brusckke

Chris Daley

Coaches: Robert H. Gass and Edward A. Hinck

University of LaVerne

Brooks Haynie

Al Zakarian

Coach: Bob Rivera

Loyola Marymount University

Madison Laird

Todd Flaming

Coaches: Jay Busse and Barbara Busse

University of Redlands "A"

Dave Herrick

Marc Rubinstein

Coach: William Southworth

University of Redlands "B"

Rodger Cole

Bruce Wren

Coach: William Southworth

University of Southern California

James M. Gaynor

Robert J. McDade

Coaches: Tom Hollihan and Randy Lake

DISTRICT III

Baylor University "A"

Martin Loeber

J. Daniel Plants

Coach: Erik Walker

Baylor University "B"

David Giardina

Robert Wood

Coach: Erik Walker

University of Kansas "A"

Barry Pickens

Pat Whalen

Coaches: Donn W. Parson, Robert Rowland, and Bruce Daniel

University of Kansas "B"

Erik Doxtader

Andrea Richard

Coaches: Donn W. Parson, Robert Rowland, Joan Archer, and Bruce Daniel

North Texas State University

Kyle Garrison

Keith Woods

Coaches: John Gossett, Joel Rollins, Matt Caligur, and Will Helixon

Southern Methodist University

Todd Lipscomb

Eric Stahl

Coach: Laura Rollins

Southwest Texas State University

Lisa Coppoletta

Russ Phelps

Coach: Rey Garcia

University of Texas, Austin "A"

Traci Jones

Thadeaus Swiderski

Coaches: Scott Segal and John Bosma

University of Texas, Austin "B"

Tito Rodriguez

Jay Strenio

Coaches: Scott Segal and John Bosma

Texas A & M University

Lisa Carlson

Nicole White

Coach: Nick Backus

Washburn University "A"

Marie Mater

Heather Nye

Coaches: David L. Boman and Carmen Tucker

Washburn University "B"

John Leahy

Wendy Tatro

Coaches: David L. Boman and Carmen Tucker

DISTRICT IV

Concordia College "A"

Robert Groven

Curt Sylvester

Coaches: Fred Sternhagen and John Burtis

Concordia College "B"

Joseph Schmitt

Courtney Ward

Coaches: Fred Sternhagen and John Burtis

University of Iowa "A"

Mike Lennon

Steve Wells

Coaches: John R. Lyne, David B. Hingstman, and David Rhaesa

University of Iowa "B"

Shawn Shearer

Cary Stamp

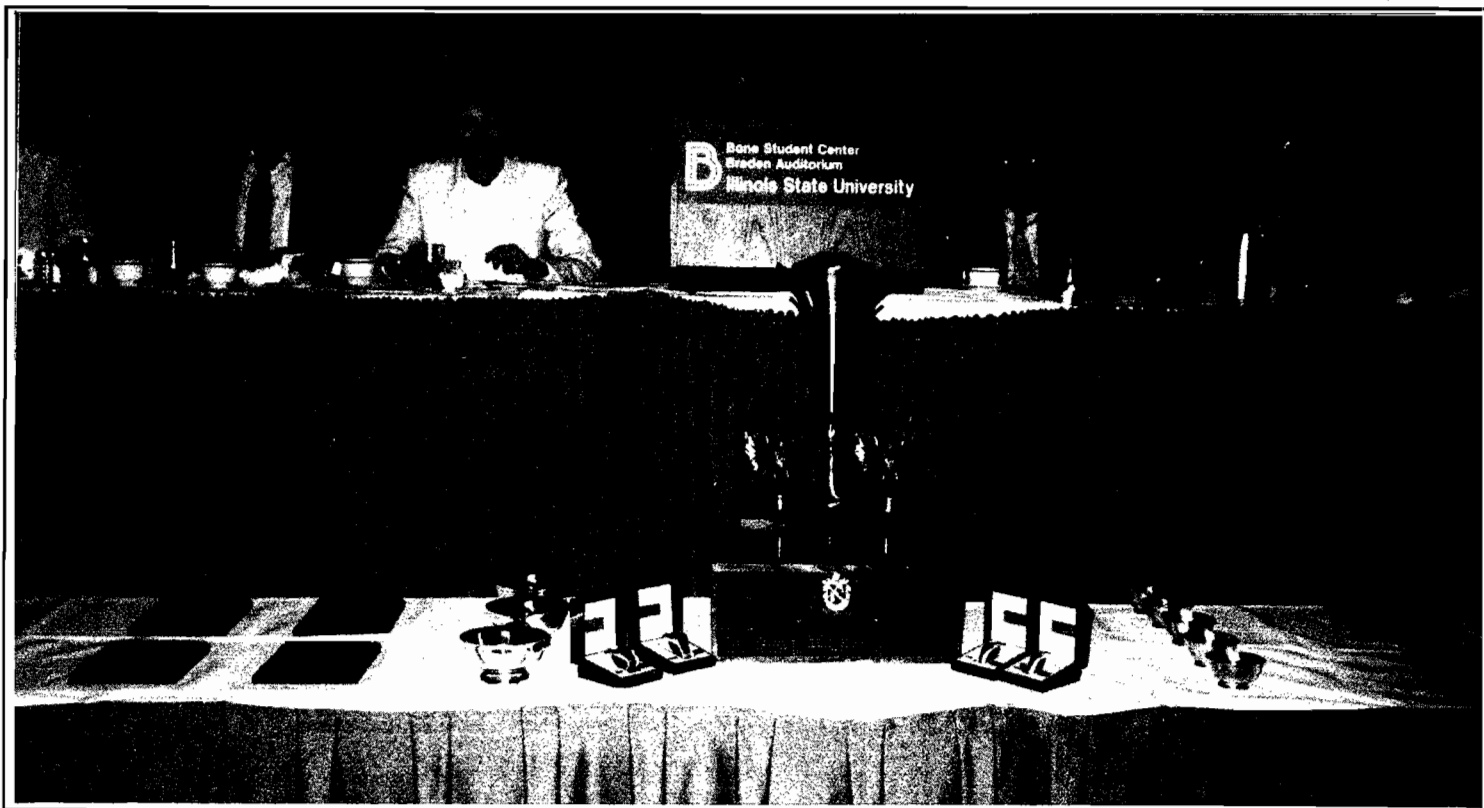
Coaches: John Lyne, David B. Hingstman, and David Rhaesa

University of Northern Iowa "A"

Aaron Hawbaker

Ken Schuler

Coaches: Bill Henderson and Neil Phillips



Tournament Banquet & Awards, 1987

Sunday, March 27

- 7:30 Continental Breakfast, Student Union Gallery
- 8:00 Announcement of Round VII
- 8:30 Round VII
- 11:15 Lunch, Student Union Gallery
- 12:45 Announcement of Round VIII
- 1:15 Round VIII
- 5:15 Announcement of First Elimination Round
- 6:00 First Elimination Round
- 7:00 No-host Cocktail Hour, Poolside, Ogden Hilton Hotel
- 8:30 Tournament Banquet, Promontory Ballroom, Ogden Hilton Hotel

Monday, March 28

- 8:00 Drawing of Octafinal Judges, Executive A, Ogden Hilton Hotel
- 8:15 Announcement of Octafinal Pairings, Promontory Ballroom, Ogden Hilton Hotel
- 8:45 Octafinal Rounds
- 12:00 Announcement of Quarterfinal Pairings, Promontory Ballroom, Ogden Hilton Hotel
- 12:30 Quarterfinal Rounds
- 3:30 Announcement of Semifinal Pairings, Promontory Ballroom, Ogden Hilton Hotel
- 4:00 Semifinal Rounds
- 7:00 Announcement of Final Pairings, Promontory Ballroom, Ogden Hilton Hotel
- 7:30 Final Debate, Promontory Ballroom, Ogden Hilton Hotel

1988 NDT Schedule

Thursday, March 24

- 2:00 - 6:00 Registration, Ogden Hilton Hotel
9:30 Opening Assembly, Promontory Ballroom, Ogden Hilton Hotel
10:30 District IX Reception for Coaches and Judges, Ogden Hilton Hotel

Friday, March 25

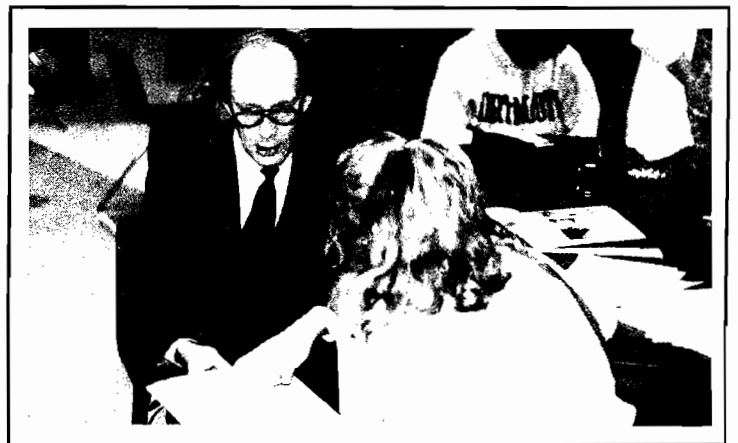
- 8:45 Continental Breakfast, Student Union Ballroom
9:15 Announcement of Round I
10:00 Round I
12:15 Lunch, Student Union Gallery
2:00 Announcement of Round II
2:30 Round II
5:15 Weber State College Hosted Buffet Dinner, Student Union Gallery
6:30 Announcement of Round III
7:00 Round III
10:00 District IX Reception for Coaches and Judges, Ogden Hilton Hotel

Saturday, March 26

- 8:00 Continental Breakfast, Student Union Ballroom
8:30 Announcement of Round IV
9:00 Round IV
1:00 Announcement of Round V
1:30 Round V
3:30 AFA / Weber State College President's Reception, Gallery, Student Union
5:30 Announcement of Round VI
6:00 Round VI
10:00 Reception for Coaches and Judges, Ogden Hilton Hotel



Continental Breakfast, 1987



Maverick Judge Explains Decision

District Committees

DISTRICT I

Jay Busse, Loyola Marymount University, Chair
Kevin Baaske, California State University, LA
Ed Hinck, California State University, Fullerton
Steven Combs, Claremont-McKenna College
Randy Lake, University of Southern California
Robert Rivera, University of La Verne
William Southworth, University of Redlands

DISTRICT II

Darrell W. Scott, Gonzaga University, Chair
Michael Bartanen, Pacific Lutheran University
Dave Frank, University of Oregon
Steve Hunt, Lewis & Clark College
Larry Richardson, Western Washington Univ.

DISTRICT III

Robin Rowland, Baylor University, Chair
Douglas Duke, Central State Univ., Oklahoma
Amy Fugate, Johnson County Community College
John Gossett, North Texas State University
Don Nichols, Odessa College
Marty Sadler, Houston Baptist University
Glen Strickland, Northeastern State Univ., Oklahoma

DISTRICT IV

John Bart, Augustana College, Chair
Chuck Brody, Gustavus Adolphus College
Dick Lesicko, Macalester College
Neil Phillips, University of Northern Iowa
Fred Sternhagen, Concordia College
Matt Sobnosky, University of Nebraska

DISTRICT V

David Pelham, Central Michigan University, Chair
Bob Chandler, Illinois State University
Frank Guliuzza, University of Notre Dame
Charles Kauffman, Northwestern University
Jack Rhodes, Miami University
David Snowball, Augustana College
George Ziegelmüller, Wayne State University

DISTRICT VI

Bill Slagle, Samford University, Co-chair
Walter Ulrich, Vanderbilt University, Co-chair
Bill Balthrop, University of North Carolina
Richard Edwards, Georgia State University
Scott Harris, University of Louisville
Allan Loudon, Wake Forest University
Frank Lowery, Emory University
J.W. Patterson, University of Kentucky

DISTRICT VII

Roger Soenksen, James Madison University, Chair
Edward Grinder, O.S.B., St. Vincent College, Rep.
David Cheshier, Georgetown University
Warren Decker, George Mason University
Michael Overking, Fairmont State College
Phillip Warken, United States Naval Academy

DISTRICT VIII

Dale Herbeck, Boston College, Co-chair
Dallas Perkins, Harvard University, Co-chair
Frank Colbourne, Pace University
Paul Rosenthal, Bates College
Alfred C. Snider, University of Vermont
Ken Strange, Dartmouth College
Ed Trudeau, Nassau Community College
Joe Willmore, University of Massachusetts

DISTRICT IX

Sharon Porter, Northern Arizona University, Chair
B. Wayne Callaway, University of Wyoming
Duane Fish, University of Utah
Ann Gill, Colorado State University
James A. Johnson, The Colorado College
Clark Olson, Arizona State University



District Committee Meeting

Officials

DIRECTOR

David Zarefsky,
Northwestern University

HOST

Randolph J. Scott,
Weber State College

HOST COMMITTEE

Becky Johns,
Weber State College
Pierre Heidrich,
Weber State College

ADMINISTRATION

Glen Clatterbuck,
University of Denver
Jean DeHart,
Clemson University
Gary Larson,
Wheaton College
Kathryn Olson,
University of Alabama in Huntsville
Lance Rosenzweig,
Capel Court Pacific, Inc., Los Angeles
Paul Slappey,
University of Iowa
Walter Ulrich,
Vanderbilt University
Gregg Walker,
Oregon State University

TOURNAMENT COMMITTEE

Charles M. Kauffman,
Northwestern University,
AFA Midwestern Representative, Chair
John Gossett,
North Texas State University,
AFA Southern Representative, Secretary
William Slagle,
Mercer University, District VI,
Parliamentarian
Jay Busse,
Loyola Marymount University, District I
Darrell Scott,
Gonzaga University, District II
Robert C. Rowland,
Baylor University, District III

John Bart,

Augustana College (S.D.), District IV

David Pelham,

Central Michigan University, District V

Walter Ulrich,

Vanderbilt University, District VI

Bro. Edward Grinder,

St. Vincent College, District VII

Dallas Perkins,

Harvard University, District VIII

Dale Herbeck,

Boston College, District VIII

Sharon Porter,

Northern Arizona University, District IX

Warren Decker,

George Mason University,
AFA Eastern Representative

Clark Olson,

Arizona State University,
AFA Western Representative

David Zarefsky,

Northwestern University,
Tournament Director

Patricia M. Ganer,

Cypress College, AFA President (ex-officio)

Bill Henderson,

University of Northern Iowa, Chair,
NDT Board of Trustees (ex-officio)

Michael Bartanen,

Pacific Lutheran University, Chair,
AFA Educational Practices
Committee (ex-officio)

Randolph J. Scott,

Weber State College,
Tournament Host (ex-officio)

BOARD OF TRUSTEES

Bill Henderson,

University of Northern Iowa, Chair (1989)

Jack Rhodes,

Miami University, Treasurer (1990)

James A. Johnson,

The Colorado College (1988)

Michael David Hazen,

Wake Forest University (1992)

Lucy M. Keele,

California State University at
Fullerton (1991)

Tournament 1988

teams representing the nine Districts were invited on the basis of their superior debating in District tournaments. Eleven additional teams were selected by the National Committee on an at-large basis after the District Tournaments.

Guest judges, recommended by their District committees and selected by the tournament director, join coach-judges accompanying the debate teams to staff three-person judging panels. In the first two preliminary rounds, judges are assigned at the discretion of the tournament director. Within specific constraints, judges are assigned to a particular debate on the basis of random selection. In rounds three through eight, and in the elimination rounds, judge panels are constituted on the basis of the mutual preferences of the teams involved in the given debate. These standards are designed to provide the best balance and highest quality criticism and evaluation of debate rounds.

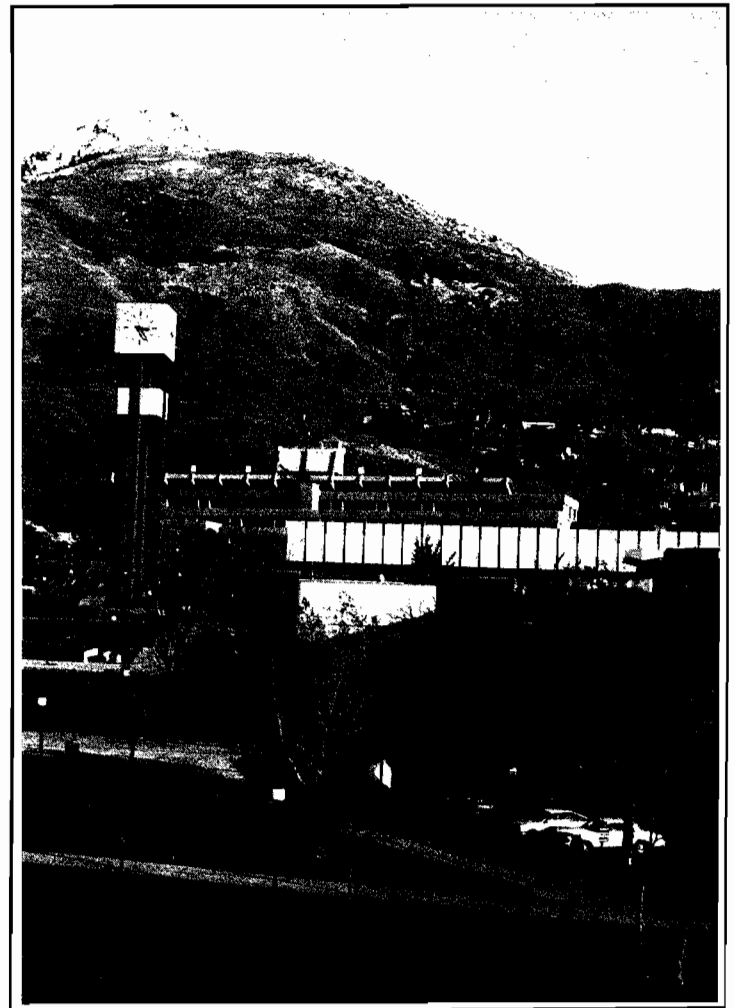
The first round is matched on a pre-set schedule based upon the order in which teams qualified for the tournament, with schools from the same district not meeting. All other odd-numbered rounds are paired on the basis of direct power (high records meeting high records). All even-numbered rounds are paired high-low within records. Any team can be paired against any other school in the preliminary rounds, and against any other team in the elimination rounds.

All teams with preliminary round records of 6-2 or better, and all teams with 5-3 records and 13 or more ballots, will participate in the elimination rounds. Seeding is determined by win-loss records, total ballots, and adjusted team points after dropping high and low. The first elimination round will feature a partial bracket so that sixteen teams will remain after its conclusion. Four subsequent elimination rounds will culminate in the selection of one team as the national champion of collegiate debate. Awards are given to the outstanding individual speakers after the eight rounds of preliminary competition. Ten speakers are recognized on the basis of adjusted speaker points, with highs and lows being dropped up to four times.

One key element of the National Debate Tournament has been the support of past participants and community leaders. The early contributions of the United States

Military Academy are exemplified by George Walker, for whom the permanent second-place trophy is named. Walker was an excellent debater for West Point who won the NDT in 1956 and placed second in 1957. The support of business and professional people is typified by Sigurd S. Larmon, Dartmouth '14, for whom the permanent first-place trophy is named. In recent years financial grants from the Ford Motor Company Fund have made it possible for the tournament to prosper. Their support is recognized in the Ford Fund watches for the final round participants.

Perhaps the most important aspect of the National Debate Tournament through the years has been the people associated with it. Key people in many fields and professions have received communicative and argumentative training from debate, have displayed these skills in the National Debate Tournament, and remember the NDT as a significant event in their lives.



Weber State College Campus

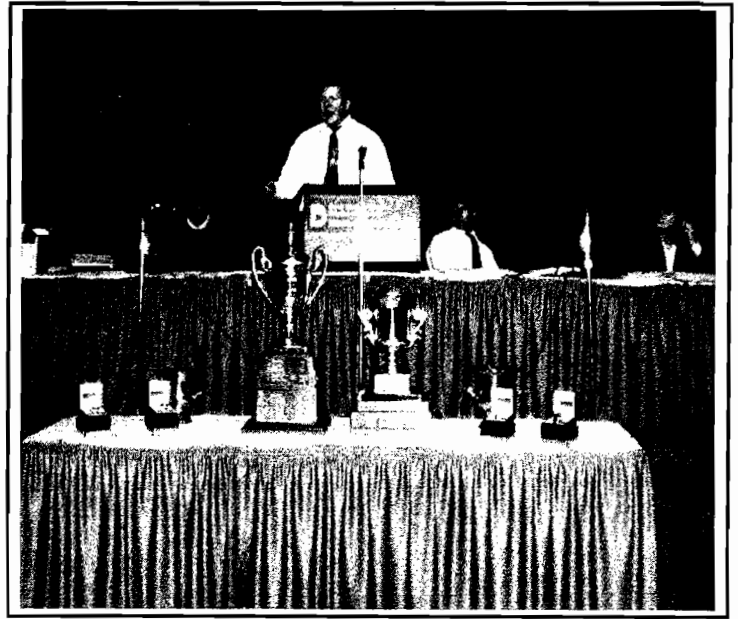
The National Debate

The National Debate Tournament began at the United States Military Academy in 1947. The NDT was organized and run by the academy, at West Point, for its first twenty years. In the early years of the tournament, the rules were determined by West Point administration in consultation with such debate coaches as A. Craig Baird of the University of Iowa, G.M. Musgrave of Des Moines, Alan Nichols of the University of Southern California, E.R. Nichols of the University of Redlands, and Joseph O'Brien of Pennsylvania State University.

At the first tournament in 1947, twenty-nine colleges participated in five "seeding" rounds and four elimination rounds over a three day period. Some of the features of the tournament were that no school would meet a school within five hundred miles of itself during the seeding rounds and that no coach would judge a school from his or her own district. Many traditions were started at West Point that year, some of which still remain today: the "big board", oral announcement of round pairings, cadet escorts for each team, teams for each debate meeting under the banner of the affirmative team, and team signs in the rooms.

In 1967, the National Debate Tournament entered a new era as the American Forensic Association, the national professional organization of forensics educators, assumed responsibility for the tournament. The NDT was moved from West Point and has been hosted by a different school every year since. Control of the tournament became the responsibility of a national committee elected by those schools supporting the tournament. As debate has developed in recent years, other refinements have been added to the tournament, including the cross-examination format, formulas for allocating bids to the tournament, the ten-minute preparation time rule, elaborate procedures for assigning judges, judging qualifications, and published critiques of the final debate.

Over the years, the tournament has expanded in size, with various procedures used for selecting the participants. In the early days, teams were chosen by district nominating



1987 Final Debate

committees. This method later was replaced by some form of qualifying tournament in most districts. For the first twenty years of NDT, the tournament host and previous year's winner received automatic invitations. Post-district at-large bids were initiated in 1968 and pre-district bids in 1971. Since 1970, it has been possible for a school to qualify as many as two teams for the NDT. In the early 1970's certain large tournaments were designated as national qualifiers, but today we rely on a combination of district tournaments and at-large bids. This year seventy-four teams will participate in the NDT.

The forty-second National Debate Tournament is sponsored by the American Forensic Association with support from the Ford Motor Company Fund. District and national committees have expended much time and effort to insure that the tournament reflects the highest quality debating throughout the nation.

Sixteen teams were selected at-large by the National Debate Tournament Committee on the basis of outstanding records prior to the District tournaments. Forty-seven

Resolved:

That the United States should reduce substantially its military commitments to NATO member states.



WEBER STATE COLLEGE

DEPARTMENT OF COMMUNICATION-1903
OGDEN, UTAH 84408
801-626-6426

To All Participants in the 1988 National Debate Tournament:

It is my distinct pleasure to welcome you to Weber State College. I join with our faculty, staff and students in congratulating you on earning an opportunity to participate in this most prestigious debate tournament.

Critical thinking and communicating well are two of the most important talents we can acquire. At Weber State College we support and appreciate the contribution intercollegiate debate makes in fostering and teaching these aptitudes. Weber State College enjoys a long, proud history in intercollegiate forensics and we are pleased to serve as host for the National Debate Tournament.

We are honored to have the top collegiate debaters in the nation on our campus. Good luck and enjoy your stay at Weber State College.

Sincerely,
Stephen Nadauld
Stephen Nadauld
President

NDT 1988

American Forensic Association



PRESIDENT
PATRICIA M. GANER Cypress College

VICE PRESIDENT
BILL BALTHROP University of North Carolina

SECRETARY
JAMES W. PRATT University of Wisconsin
River Falls

TREASURER
JAMES A. JOHNSON The Colorado College

NATIONAL COUNCIL

THOMAS A. HOLLIHAN University of Southern California

KAREN KING LEE Indiana University

JOE CARDOT Abilene Christian University

CAROLYN KEEFE West Chester University of Pennsylvania

PEG TAYLOR Orange Coast College

CRAIG BEETHAM Puyallup High School (WA)

VIRGINIA O'KEEFE West Potomac High School (VA)

March, 1988

To All Participants in the 1988 National Debate Tournament:

On behalf of the American Forensic Association, I extend my sincere congratulations to each of you for being selected to participate in the National Debate Tournament. It is truly an honor to be recognized as among the finest debate teams in the country and you have every reason to be proud of your accomplishments. I have always regarded the awarding of the participant cups at the beginning of the tournament as the most meaningful awards assembly as they symbolize and celebrate the excellence and commitment that brought you here.

I am sure all of you would join me in thanking the people who have made this tournament possible. Special appreciation must be extended to Tournament Host Randy Scott and Weber State College for their hospitality; the extremely capable Tournament Director David Zarefsky and his staff; Bill Henderson and the NDT Board of Trustees; Chuck Kauffman and the NDT Committee; the members of the nine District Committees; and the Ford Motor Company Fund. Without their commitment and diligent efforts over the year, the NDT would not be the remarkable event it is.

It may be tempting, with the Wasatch Mountains in the background, to regard this tournament as a "peak" experience. While the NDT should rightfully be regarded as the apex of your debate career, it is not the ultimate in your argumentative career. I urge you to continue to use the skills you have developed in debate to scale other mountains, the mountains that stand in the way of social progress and justice. When that happens, all of society, and not just those of you here, will be the winners.

Best Wishes,
Patricia M. Ganer
Patricia M. Ganer



Leo J. Brennan, Jr.
Executive Director

Ford Motor Company Fund
The American Road
P.O. Box 1899
Dearborn, Michigan 48121-1899

March 2, 1988

To All Participants in the 1988 National Debate Tournament:

Once again, Ford Motor Company Fund is honored and privileged to co-sponsor the National Debate Tournament, and I extend best wishes and congratulations to all participants. Your presence at this Tournament reflects the many achievements you have already accomplished, and we are pleased to be associated with you in this outstanding event.

With every best wish for continued success in the years ahead, I am

Sincerely,
Leo J. Brennan Jr.

Welcome!